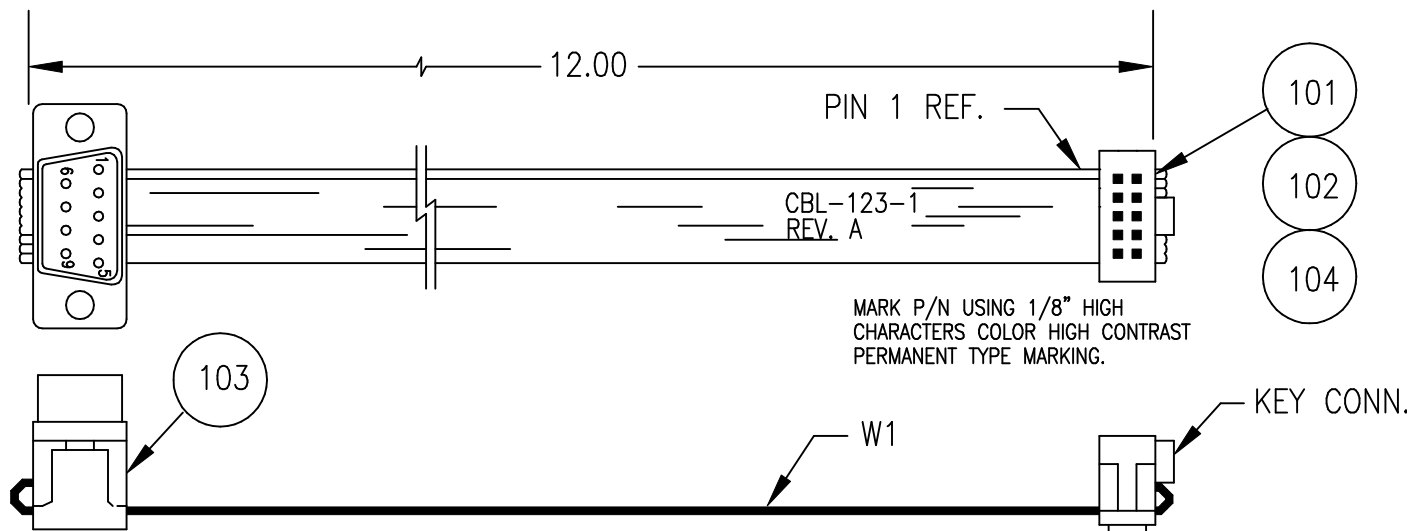


REV.	DESCRIPTION	DATE:	ALT. BY	APPROVED
A	CONVERTED TO CAD.	2-15-90	K. THOMAS	



DET.	REF.	DESCRIPTION	MANUFACTURER	MPART NO.	WIN. NO.	-1	100		
100	EI	AT/XT SERIAL CABLE			CBL-123-1	1			
101	*	RIBBON CONN. 10 PIN	PANDUIT	050-010-455	270-0010-455	1			
102		STRAIN RELIEF, 10 PIN	PANDUIT	050-000-010	271-0010-500	1			
103	**	9P DSUB MALE W/STRAIN AND METAL SHELL	PANDUIT	IDM-9-PH5	272-0009-200	1			
104		POLARIZING KEY	PANDUIT	050-000-043	271-0000-000	1			
W1	***	28AWG, RIBBON CABLE	PANDUIT	050F28V10-C	269-0010-000		13"		
*		ALT IDC CONN IF USED MUST MEET MIL-C-83503 AND HAVE WINSYSTEMS APPROVAL.							
**		ALT D-SUB IF USED MUST MEET MIL-C-24308 AND HAVE WINSYSTEMS APPROVAL.							
***		ALT. WIRE MAY BE USED, MUST BE STYLE UL2651.							

NOTE: CABLE ASSY MUST BE ELECTRICALLY TESTED.

*WinSystems, Inc.*

"THE STD BUS AUTHORITY"

TITLE:

*CBL-123-1 (AT/XT SERIAL CABLE)*

DRW. BY:

K. THOMAS

DATE:

2-15-90

APP. BY:

DATE:

ACAD ID:

CBL1231.DWG

SCALE:

NOTED

TOL:

FSCM. NO:

DRW. NO:

REV:

A

SHT. OF

1

1

FULL SCALE

PART NO.	CBL-123-1			
TOLERANCE UNLESS NOTED	(0.0)	(0.00)	(0.000)	ANG.
	±	±	±	±

100