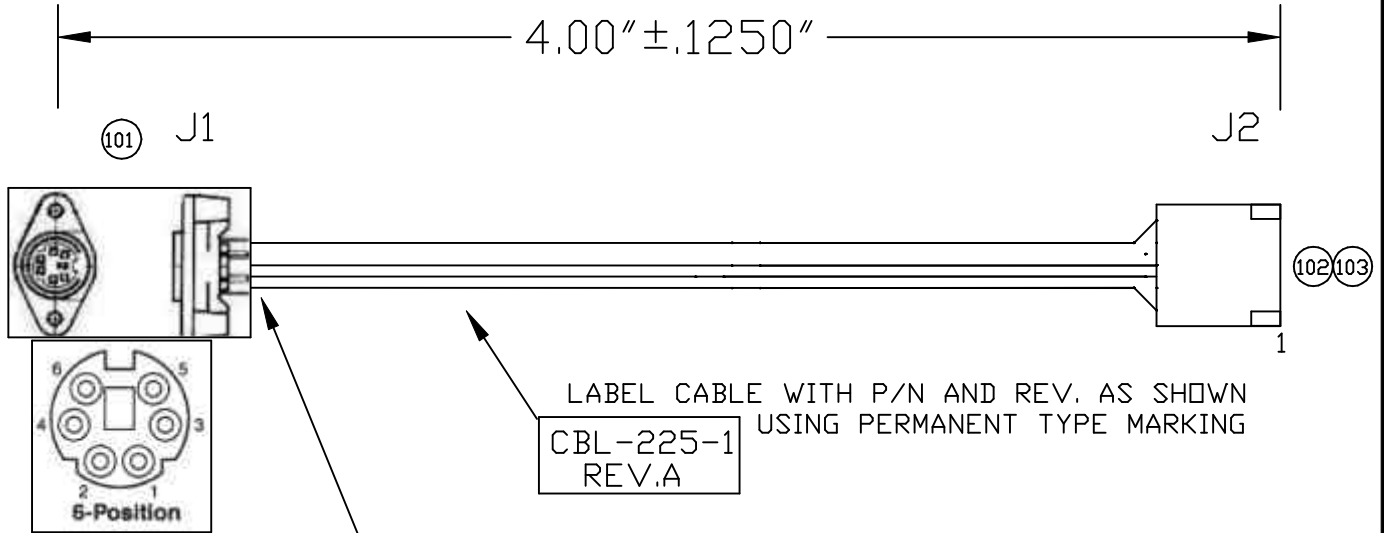


REV.	DESCRIPTION	DATE	ALT. BY	APPROVED
A	INITIATED	09-15-98	M.BROWNING	



WIRE LIST

J1	J2
1	1
2	N/C
3	3
4	4
5	5
6	N/C

NOTE: CUT WIRES AT J1, PINS 2 & 6. (MANUFACTURER POPULATED)

DET.	REF.	DESCRIPTION	MANUFACTURER	MPART NO.	WIN. NO.	-1	100		
100	EI	CBL-225-1			CBL-225-1	1			
101		6 PIN MINI-DIN FEMALE (PS/2 STYLE)	GOLDEN PACIFIC ELECTRONICS	MDC-166			1		
102		5 POSITION HOUSING	MOLEX	22-01-2057			1		
103		CRIMP TERMINALS	MOLEX	08-55-0102			5		

UNLESS OTHERWISE SPECIFIED DIMENSIONS ARE IN INCHES.

TOLERANCE:

FRACTIONS: ANGLES: ± 1/2°

DECIMALS: .XX ± .03

.XXX ± .010

WinSystems, Inc.

"THE STD BUS AUTHORITY"

CABLE PS/2 MOUSE RECEPTACLE TO 5 PIN

CBL-225-1

CUSTOMER

DATE

APPRV

DATE

CHKD

DATE

SIZE

A

CAGE

1A087

DRAWING NO.

CBL-225-1

REV

A

DRAFT/DESIGN M.BROWNING

DATE 09-15-98

SCALE

CAD ID: CBL2251.DWG

SHEET NO. 1 OF 1