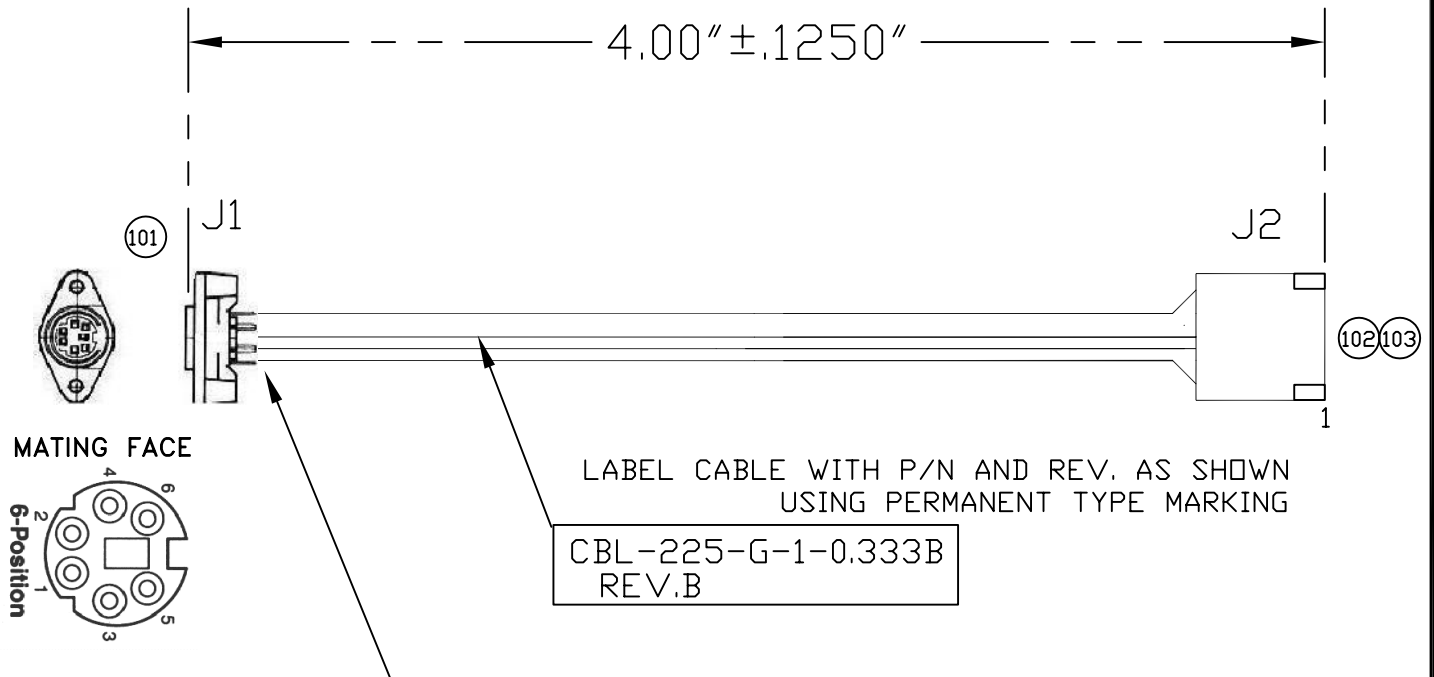


REV.	DESCRIPTION	DATE	ALT. BY	APROVED
A	INITIATED	09-15-98	M.BROWNING	
B	ROHS COMPLIANCE	10.11.06	M.BROWNING	



NOTE: CUT WIRES AT J1, PINS 2 & 6. (MANUFACTURER POPULATED)

**RoHS Compliance Notice: All Vendors providing quotations and/or materials to WinSystems, Inc. must supply a RoHS Directive "Certificate of Compliance", referencing the part number(s) of delivered items.**

WIRE LIST

J1	J2
1	1
2	N/C
3	3
4	4
5	5
6	N/C

DET.	REF.	DESCRIPTION	MANUFACTURER	MPART NO.	WIN. NO.	-1	100	
100	EI	CBL-225-G-.333-1B			CBL-225-G-1-0.333B	1		
101		6 MINI-DIN RECEPTACLE, PANEL MOUNT	CUI (DIGIKEY)	MD-60PL100 CP-2960-ND			1	RoHS
102		5 POSITION HOUSING	MOLEX	22-01-2057			1	RoHS
103		CRIMP TERMINALS	MOLEX	08-55-0102			5	RoHS

**\*ALL ALTERNATES MUST BE ELECTRICAL and MECHANICAL EQUIVALENTS to SPECIFIED PARTS, and must be RoHS COMPLIANT.**

UNLESS OTHERWISE SPECIFIED DIMENSIONS ARE IN INCHES. TOLERANCE:		<i>WinSystems, Inc.</i> "THE STD BUS AUTHORITY"			
FRACTIONS: ANGLES: ± 1/2° DECIMALS: .XX ± .03 .XXX ± .010					
CUSTOMER		DATE		CABLE PS/2 MOUSE RECEPTACLE TO 5 PIN *ROHS* CBL-225-G-1-0.333B	
APPRV		DATE			
CHKD		DATE		SIZE A	CAGE 1AU87
DRAFT/DESIGN M.BROWNING		DATE 10.11.06		DRAWING NO. CBL-225-G-1-0.333B	
		SCALE		CAD ID:	
				SHEET NO. 1 OF 1	
				REV B	