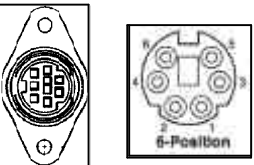
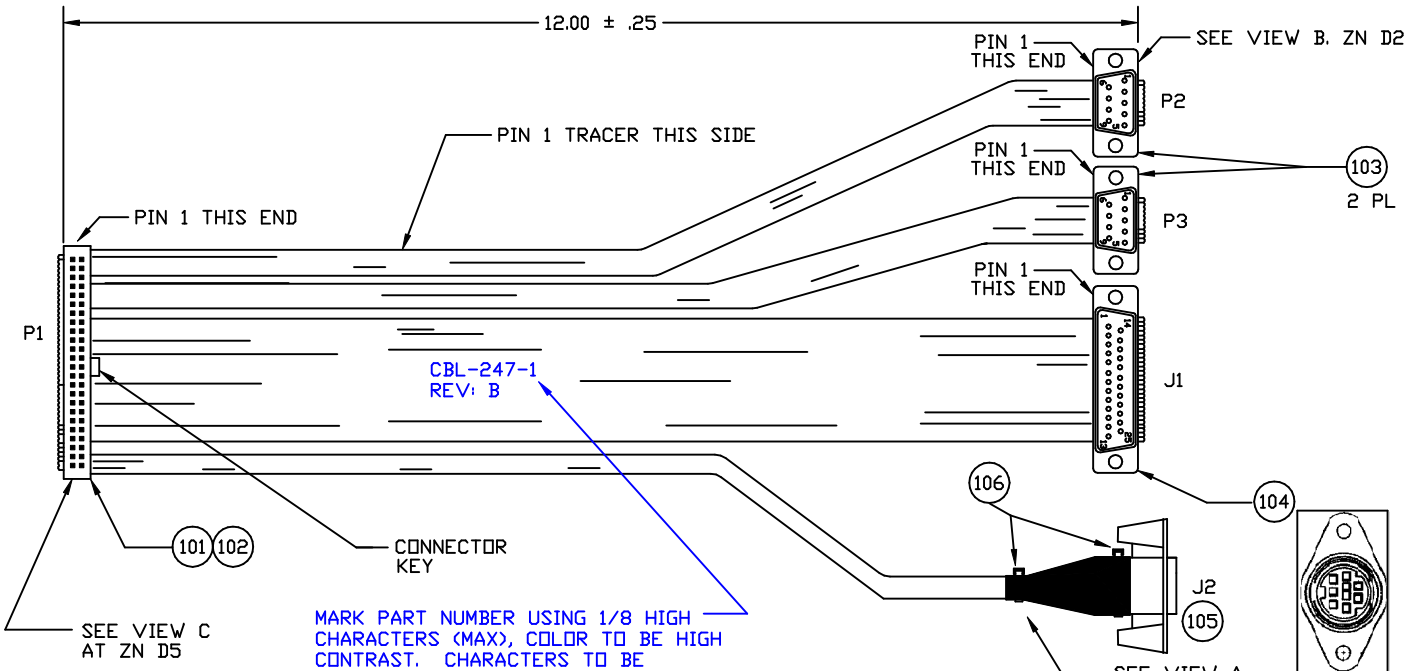


REVISIONS				
ZONE	REV	DESCRIPTION	DATE	APPROVED
B4	A	INITIATED	05/16/00	M.BROWNING
	B	ILLUSTRATE HEAT SHRINK PLACEMENT	06/14/00	M.BROWNING

TYP INSTALLATION FOR P1 (SCALE NONE) VIEW C ZN B5

REAR VIEW, WIRING END SCALE NONE VIEW A ZN B2 SEE NOTE 2,3

TYP INSTALLATION FOR P2, P3, AND J1 (SCALE NONE) VIEW B ZN C2



- NOTES:
1. INSTALL P1 PRIOR TO SPLITTING RIBBON CABLE. SPLIT TO BE FLUSH TO WITHIN .20 INCHES OF P1. SPLIT RIBBON CABLE IN SUCH MANNER AS NOT TO DEGRADE ADJACENT WIRES. METHOD OF SPLITTING CABLE OPTIONAL.
 2. INSTALL 1/8" DIA. HEAT SHRINK TUBING OVER SOLDERED, SPLICE CONNECTIONS.
 3. INSTALL 3/16" I.D. HEAT SHRINK TUBING OVER AREA OF RIBBON CABLE THAT IS SPLICED, SOLDERED, "JACKETING" CONNECTOR HOUSING AS SHOWN AT J2. ADD WIRE TIES(2) OVER HEAT SHRINK FOR STRAIN RELIEF.

DET	REF	DESCRIPTION	MANUFACTURER	MPART NO.	WIN. NO.	-1	100
100	EI	CABLE, MULTI ID, W/PS2 KYBD			CBL-247-1	1	
101	*	RIBBON CONN. 50 PIN	PANDUIT	050-050-455	270-0050-455	1	
102		STRAIN RELIEF, 50 PIN	PANDUIT	050-000-050	271-0050-500	1	
103	**	DSUB, 9PIN MALE	ALPHA	FCC-282-9	272-0009-200	2	
104	**	DSUB, 25 SOCKET FEMALE	ALPHA	FCC-283-25	272-0025-100	1	
105		6 PIN MINI-DIN FEMALE (PS/2 STYLE)	GOLDEN PACIFIC ELECTRONICS	MDC-166		1	
106		WIRE TIE 4'	MOUSER			2	
W1	***	28AWG, RIBBON CABLE	PANDUIT	050F28V10-C	269-0010-000	14'	
*		ALT. IDC CONN. MAY BE USED, MUST MEET MIL-C-83503.					
**		ALT. D-SUB MAY BE USED, MUST MEET MIL-C-24308					
***		ALT. WIRE MAY BE USED, MUST BE STYLE UL2651.					

CAD MODEL FIND CHART

SHEET NO.	REV. LTR	CAD MODEL ID NO.
1	B	CBL247S1.DWG
2		CBL247S2.DWG

UNLESS OTHERWISE SPECIFIED DIMENSIONS ARE IN INCHES. TOLERANCE FRACTIONS: ANGELES: ± 1/2" DECIMALS: .xx ± .03 .xxx ± .010	CUSTOMER APPROVAL	DATE	WinSystems, Inc. "THE STD BUS AUTHORITY" CBL-247-1 (CABLE, MULTI ID, W/PS2 KYBD)
	APPROVAL	DATE	
	CHECKER	DATE	
	DRAFT/DESIGN	DATE	
	M.BROWNING	05/16/00	SIZE C 1AUB7 DWG NO. CBL-247-1 REV B SCALE 1/1 CAD ID: CBL247S1.DWG SHEET 1 OF 2

5

4

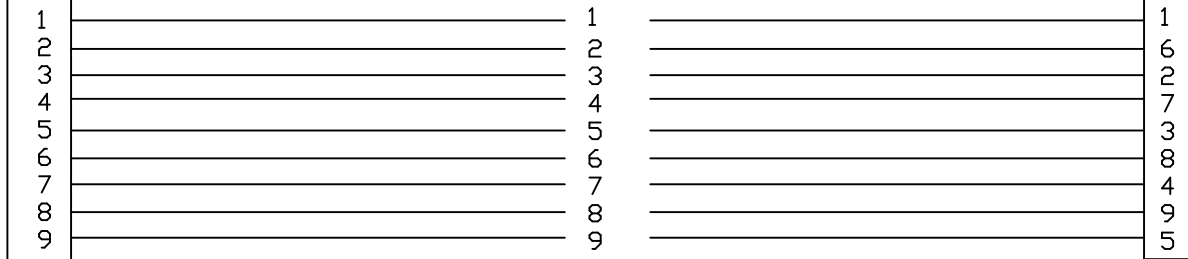
3

2

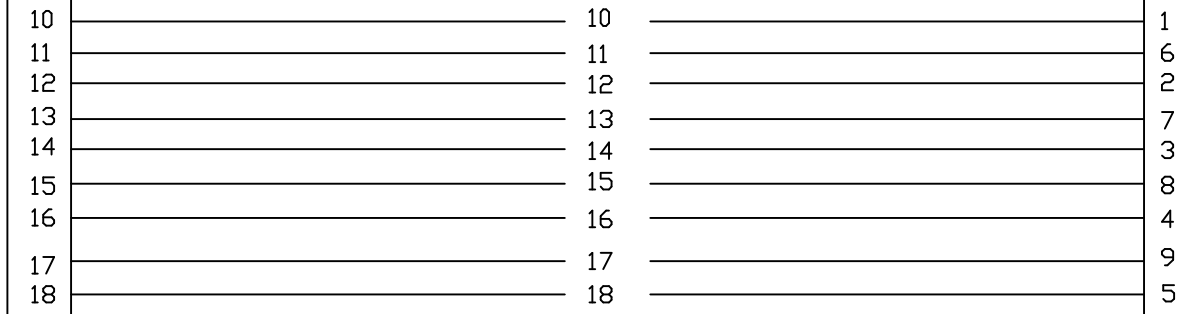
1

REVISIONS

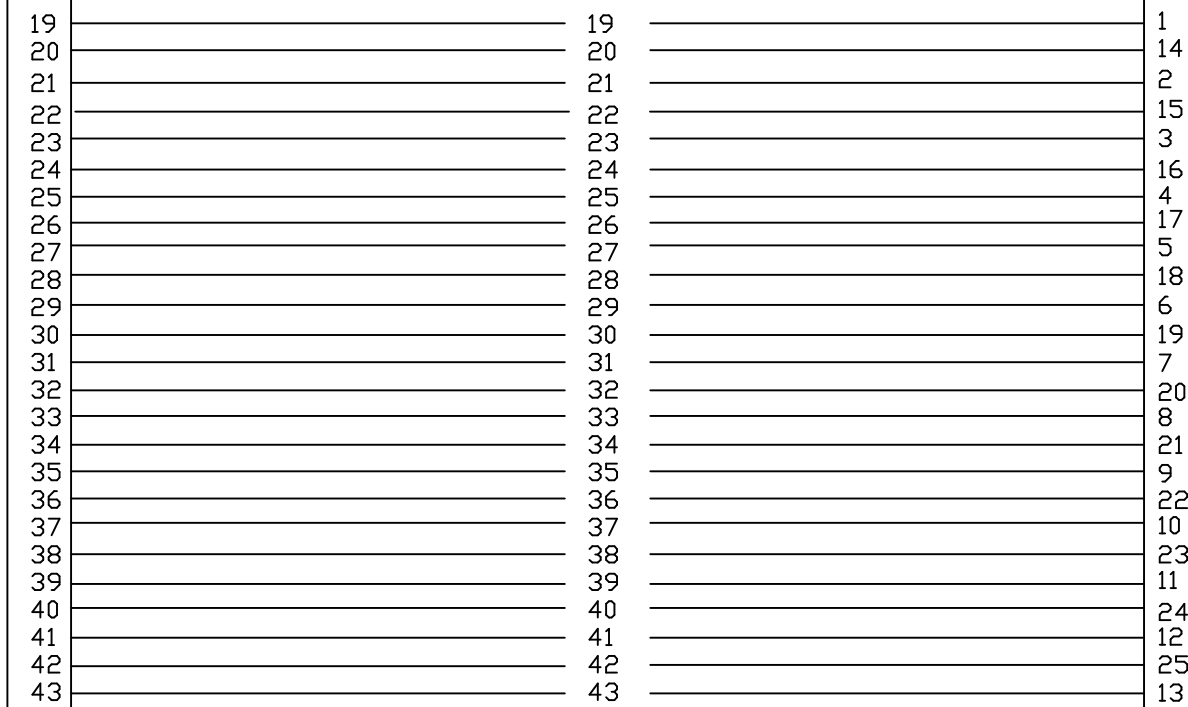
ZONE	REV	DESCRIPTION	DATE	APPROVED



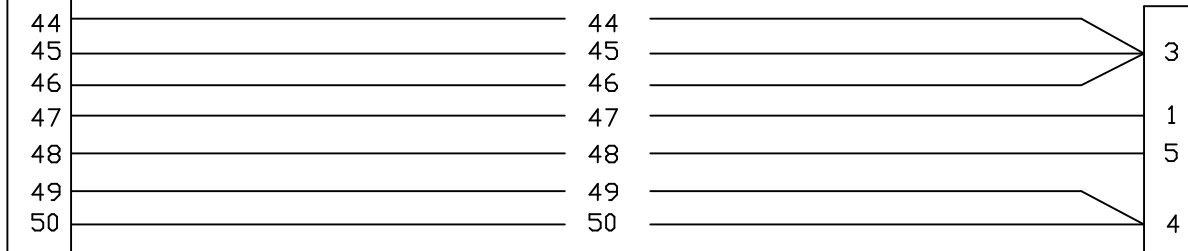
P2



P3



J1



J2

N/C

WinSystems, Inc.
"THE STD BUS AUTHORITY"

CBL-247-1 (CABLE, MULTI ID,W/PS2 KYBD)

SIZE C	CAGE CODE 1AUB7	DWG NO. CBL-247-1	REV B
SCALE NONE	CAD ID: CBL247S2.DWG	SHEET 2 OF 2	

DRAFT/DESIGN
M.BROWNING

DATE

5

4

3

2

1