

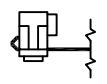
5

4

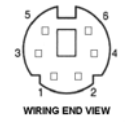
3

2

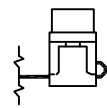
1



TYP INSTALLATION FOR P1 (SCALE NONE) VIEW C ZN B5

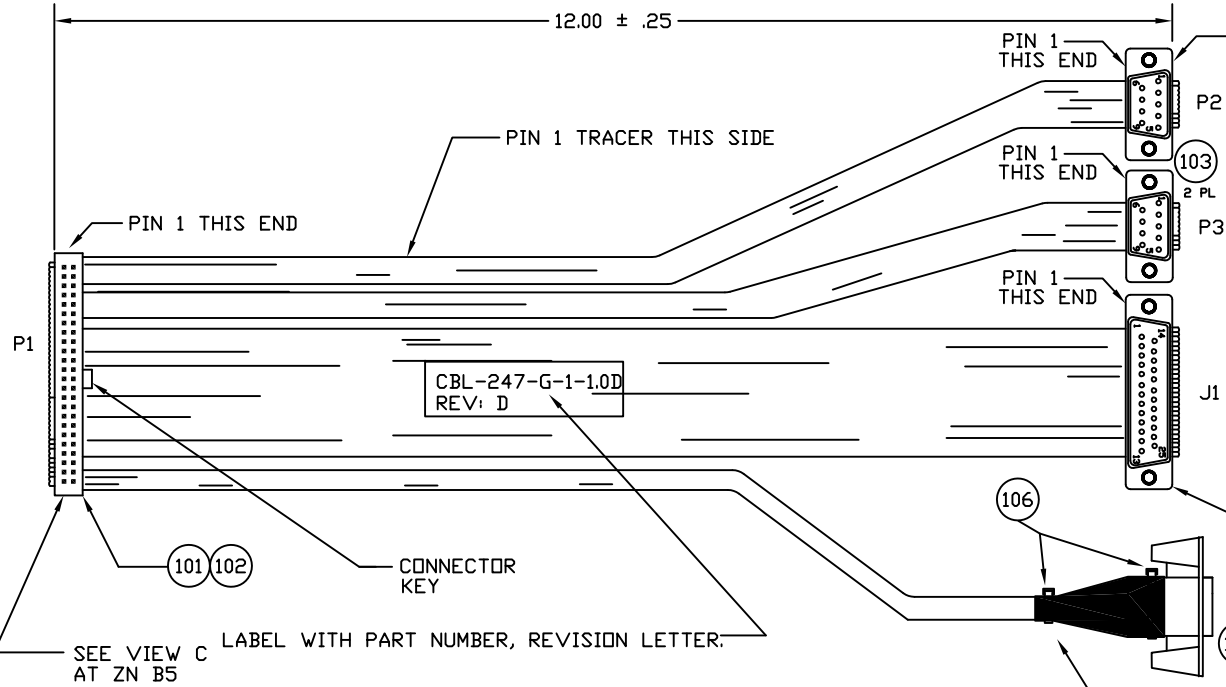


REAR VIEW, WIRING END SCALE NONE VIEW A ZN B2 SEE NOTE 2,3

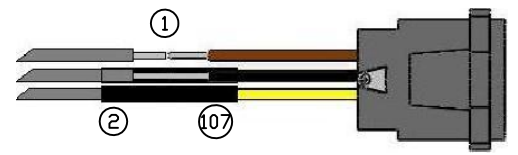


TYP INSTALLATION FOR P2, P3, AND J1 (SCALE NONE) VIEW B ZN C2

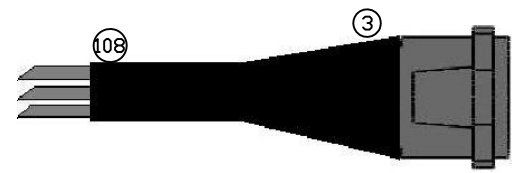
REVISIONS				
ZONE	REV	DESCRIPTION	DATE	APPROVED
	C	RoHS and 4-40 THD INSERTS	8.02.06	M.BROWNING
	D	ECD: 08-103 SHRINK WRAP ASSY	07.22.08	M.BROWNING



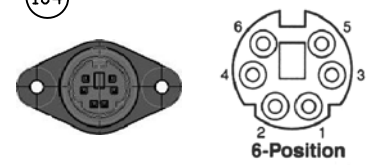
1. SOLDER WIRES TOGETHER.
2. COVER EACH SOLDER CONNECTION WITH SHRINK TUBING TO INSULATE.



3. USING SHRINK TUBING, 'JACKET' AS SHOWN TO COVER PART OF J2 HOUSING AND ALL INDIVIDUAL SOLDER CONNECTIONS.



MATING END VIEW



RoHS Compliance Notice: All Vendors providing quotations and/or materials to WinSystems, Inc. must supply a RoHS Directive "Certificate of Compliance", referencing the part number(s) of delivered items.

\*ALL ALTERNATES MUST BE ELECTRICAL and MECHANICAL EQUIVALENTS to SPECIFIED PARTS, and must be RoHS COMPLIANT.

DET	REF	DESCRIPTION	MANUFACTURER	MPART NO.	WIN. NO.	-1	100	RoHS Compliance
100	EI	CABLE, MULTI ID, W/PS2 KYBD				1		RoHS
101	**	RIBBON CONN. 50 PIN	ITW-PANCON	050-050-455A		1		RoHS
102		STRAIN RELIEF, 50 PIN	ITW-PANCON	050-000-050		1		RoHS
103	**	DSUB MALE 9PIN V/STRAIN REL AND # 4-40 THREADED INSERTS	ITW-PANCON	IDM9PT5 with DA009		2		RoHS
104	**	DSUB FEMALE 25PIN V/STRAIN REL AND # 4-40 THREADED INSERTS	ITW-PANCON	IDM25ST5 with DA025		1		RoHS
105		6 MINI-DIN RECEPTACLE, PANEL MOUNT	CUJ (DIGIKEY)	MD-60PL100 CP-2960-ND		1		RoHS
106		WIRE TIE 4'	PANDUIT (MOUSER)	PLT1M-M		2		RoHS
W1	***	28AWG, RIBBON CABLE	ITW-PANCON	050F28V50-CR		14'		RoHS
107		SHRINKABLE TUBING 3/4 HIGH SHRINK RATIO POLYOLEFIN	ALPHA WIRE	FIT-321-1/8		1.25"		RoHS
108		SHRINKABLE TUBING 3/4 HIGH SHRINK RATIO POLYOLEFIN	ALPHA WIRE	FIT-321-1/2		1.25"		RoHS

NOTES:

1. INSTALL P1 PRIOR TO SPLITTING RIBBON CABLE. SPLIT TO BE FLUSH TO WITHIN .20 INCHES OF P1. SPLIT RIBBON CABLE IN SUCH MANNER AS NOT TO DEGRADE ADJACENT WIRES. METHOD OF SPLITTING CABLE OPTIONAL.
2. INSTALL 1/8" DIA. HEAT SHRINK TUBING OVER SOLDERED, SPLICE CONNECTIONS.
3. INSTALL 3/16" I.D. HEAT SHRINK TUBING OVER AREA OF RIBBON CABLE THAT IS SPLICED, SOLDERED, 'JACKETING' CONNECTOR HOUSING AS SHOWN AT J2. ADD WIRE TIES(2) OVER HEAT SHRINK FOR STRAIN RELIEF.

CAD MODEL FIND CHART

SHEET NO.	REV. LTR	CAD MODEL ID NO.
1	D	CBL-247-G-1-1.0D_S1
2		CBL-247-G-1-1.0D_S2

UNLESS OTHERWISE SPECIFIED DIMENSIONS ARE IN INCHES.  
 TOLERANCE FRACTIONS: ANGLES: ± 1/2° DECIMALS: .XX ± .03 .XXX ± .010

CUSTOMER APPROVAL	DATE
APPROVAL	DATE
CHECKER	DATE
DRAFT/DESIGN	DATE
M.BROWNING	06.15.06

**WinSystems, Inc.**  
 "THE STD BUS AUTHORITY"

CBL-247-G-1-1.0D\*RoHS\*(MULTI ID, W/PS2 KYBD)

SIZE C	CAGE CODE 1AUB7	DWG NO. CBL-247-G-1-1.0D	REV D
SCALE 1/1	CAD ID:	SHEET 1 OF 2	

5

4

3

2

1

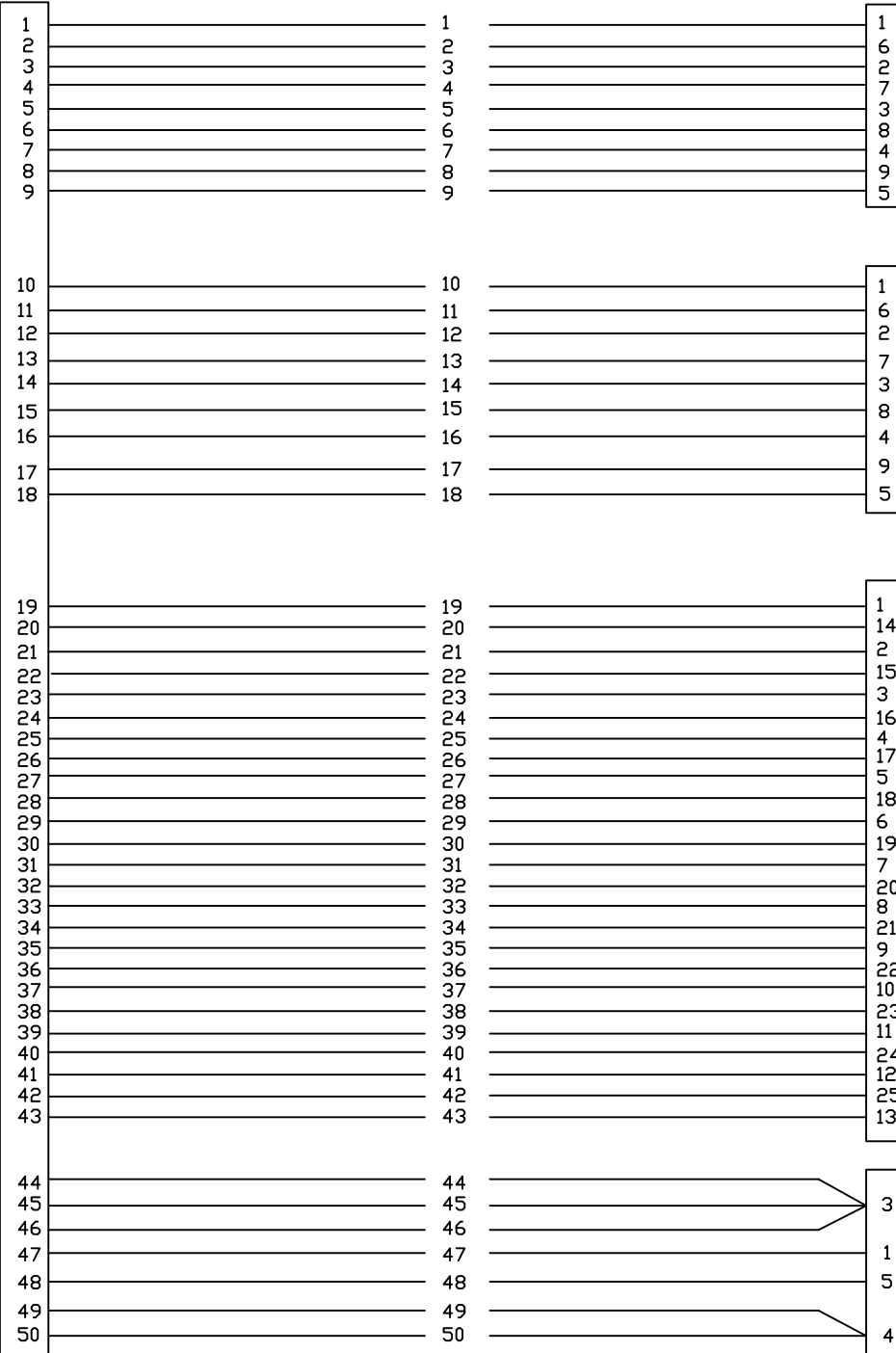
5

4

3

2

1



REVISIONS				
ZONE	REV	DESCRIPTION	DATE	APPROVED
	C	RoHS and 4-40 THD INSERTS	8.02.06	M.BROWNING
	D	ECD: 08-103 SHRINK WRAP ASSY.	07.22.08	M.BROWNING

P2

P3

J1

J2

\*ALL ALTERNATES MUST BE ELECTRICAL and MECHANICAL EQUIVALENTS to SPECIFIED PARTS, and must be RoHS COMPLIANT.

RoHS Compliance Notice: All Vendors providing quotations and/or materials to WinSystems, Inc., must supply a RoHS Directive "Certificate of Compliance", referencing the part number(s) of delivered items.

<b>WinSystems, Inc.</b>				
*THE STD BUS AUTHORITY*				
CBL-247-G-1-1.0D (CABLE, MULTI ID,W/PS2 KYBD)				
*RoHS*				
SIZE	CAGE CODE	DWG. NO.	REV	
C	1AUB7	CBL-247-G-1-1.0D-S2	D	
SCALE NONE			CAD ID:	SHEET 2 OF 2

DRAFT/DESIGN  
M.BROWNING

DATE

5

4

3

2

1