

NOTES:

1. ALL DIMENSIONS INCLUDE CONNECTOR HOUSINGS
2. COVER ALL SOLDER CONNECTIONS WITH HEAT SHRINK
3. MUST BE ELECTRICALLY TESTED PER WIRE LIST.

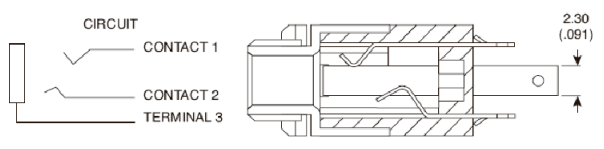
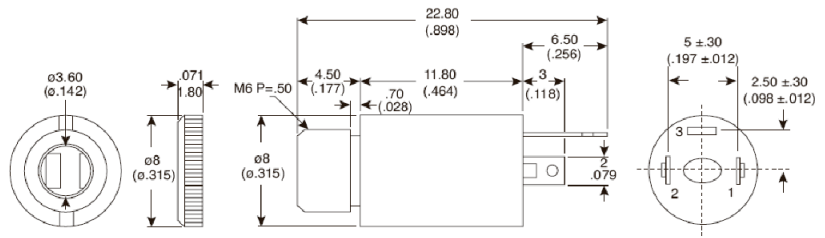
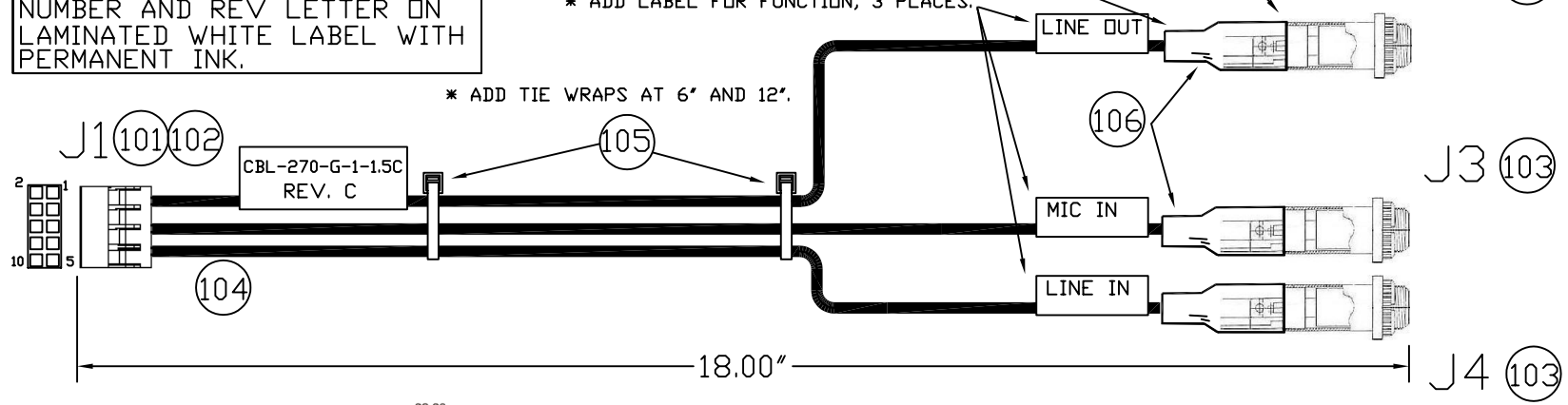
REVISIONS				
ZONE	REV	DESCRIPTION	DATE	CHANGED BY
	B	RoHS and 4-40 THD INSERTS	8.02.06	M.BROWNING
	C	CLARIFY CONN. TERMINAL ASSIGNMENT	04.03.07	M.BROWNING

* COVER WITH HEAT SHRINK, INCLUDE CONN. HOUSING, AND EXTEND BELOW SOLDER CONNECTIONS

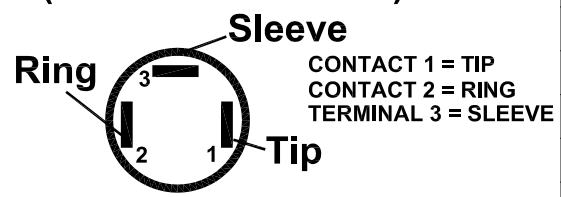
* LABEL HARNESS WITH PART NUMBER AND REV LETTER ON LAMINATED WHITE LABEL WITH PERMANENT INK.

* ADD LABEL FOR FUNCTION, 3 PLACES.

* ADD TIE WRAPS AT 6" AND 12".



PIN ASSIGNMENT (WIRING END VIEW)



WIRE LIST

J1	J2	J3	J4
	LINE OUT	MIC IN	LINE IN
1	RING		
2		RING	
3	TIP		
4		TIP	
5	SLEEVE		
6		SLEEVE	
7			RING
8			
9			TIP
10			SLEEVE

RoHS Compliance Notice: All Vendors providing quotations and/or materials to WinSystems, Inc., must supply a RoHS Directive "Certificate of Compliance", referencing the part number(s) of delivered items. *ALL ALTERNATES MUST BE ELECTRICAL and MECHANICAL EQUIVALENTS to SPECIFIED PARTS, and must be RoHS COMPLIANT.

DET	REF	DESCRIPTION	MANUFACTURER	MPART NO.	WIN. NO.	-1	100	
100	EI	AUDIO CABLE - EPIC STYLE (EPX-C3)					1	
101	*	2.00mm PITCH, MILLI-GRID CRIMP HOUSING 5110	MOLEX	51110-1051			1	RoHS
102	*	CRIMP TERMINALS MILLI-GRID, (15u") SELECT GDL 50394	MOLEX	50394-8100/ 50394-8052			10	RoHS
103	**	3.5 mm STEREO PHONO JACK BULKHEAD MOUNTABLE	KOBICONN (MUSER)	MJ-074N (161-7400-EX)			3	RoHS
104	*	CABLE, COMMUNICATION/CONTROL 24 AWG 2 COND. FOIL SHIELD, RoHS	ALPHA WIRE CO. www.alphawire.com	2400C			60 INCHES	RoHS
105	*	WIRE TIE 4"	PANDUIT (MUSER)	PLTIM-M			2	RoHS
106	*	SHRINKABLE TUBING 31 HIGH SHRINK RATIO POLYOLEFIN	ALPHA WIRE	FIT-321-1/2				RoHS

UNLESS OTHERWISE SPECIFIED DIMENSIONS ARE IN INCHES. TOLERANCES FRACTIONS ANGLES +/- 1/2" DECIMALS .XX ± .25	CUSTOMER APPROVAL	DATE
	APPROVAL	DATE
	CHECKER	DATE
	DRAFT/DESIGN M.BROWNING	DATE 06.16.06

WinSystems, Inc.
"THE STD BUS AUTHORITY"

CBL-270-G-1-1.5C *RoHS*
AUDIO CABLE - EPIC STYLE (EPX-C3)

SIZE	CAGE CODE	DWG. NO.	REV
C	1AUB7	CBL-270-G-1-1.5C	C

SCALE: CAD ID: SHEET