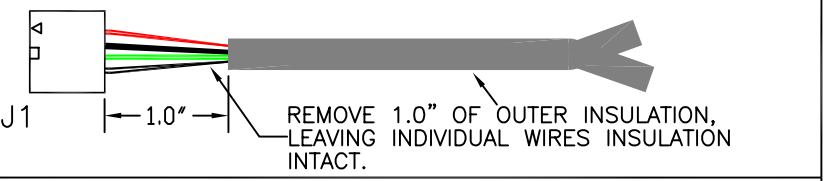
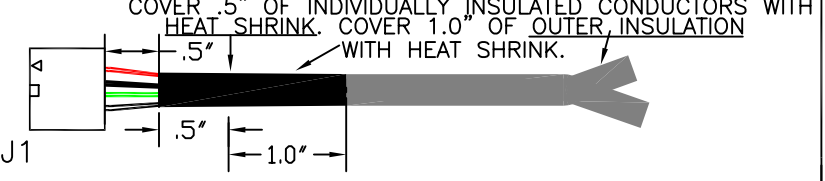


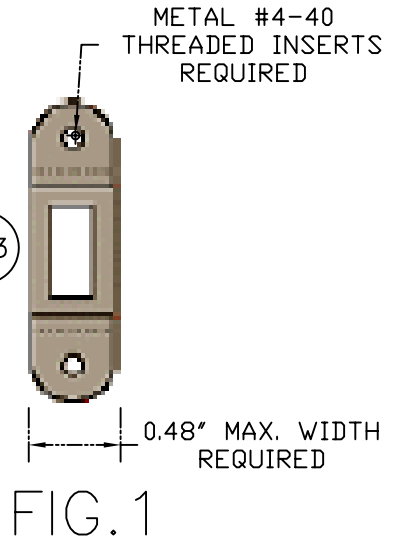
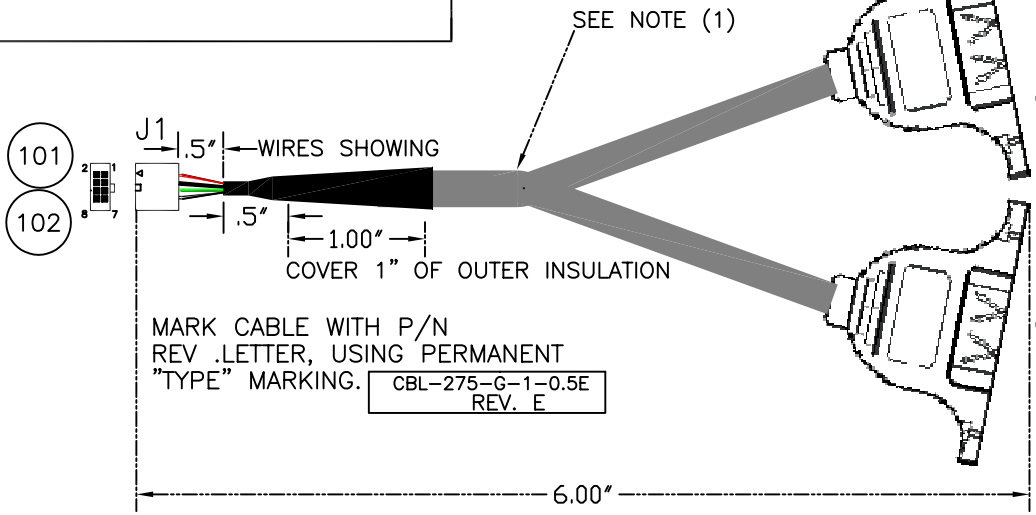
INSULATION REMOVAL DETAIL



HEAT-SHRINK APPLICATION DETAIL



| REVISIONS | | | | |
|-----------|-----|---|----------|------------|
| ZONE | REV | DESCRIPTION | DATE | CHANGED BY |
| | A | INITIATED | 01/05/05 | M.BROWNING |
| | B | ROHS VERSION | 10.11.06 | M.BROWNING |
| | C | SPECIFY WIDTH, THD 4-40, J2,J3 | 04.19.07 | M.BROWNING |
| | D | ECO 07-114, USB TYPE A CHANGE MFG TO YT TECH | 07.24.07 | M.BROWNING |
| | E | ECO 08-07: ADD DETAIL OF HEATSHRINK APPLICATION | 01.14.08 | M.BROWNING |



- *NOTES:
- (1) APPLY HEAT SHRINK OVER BOTH INSULATED CABLES TOGETHER, AS SHOWN.
 - (2) CABLE ASSY MUST BE ELECTRICALLY TESTED.
 - (3) DET.103, (J2,J3) WIDTH MUST NOT EXCEED 0.48". SEE FIG.1
 - (4) DET.103, (J2,J3) , METAL #4-40 THREADED INSERTS REQUIRED. SEE FIG.1
- *ALL ALTERNATES MUST BE ELECTRICAL and MECHANICAL EQUIVALENTS to SPECIFIED PARTS, and must be RoHS COMPLIANT.**

| WIRE LIST | | | | |
|-----------|----|----|-------|---------|
| J1 | J2 | J3 | COLOR | SIGNAL |
| 1 | 1 | | RED | USB0+5V |
| 2 | | 1 | RED | USB1+5V |
| 3 | 2 | | WHITE | USB0 D- |
| 4 | | 2 | WHITE | USB1 D- |
| 5 | 3 | | GREEN | USB0 D+ |
| 6 | | 3 | GREEN | USB1 D+ |
| 7 | 4 | | BLACK | USB0GND |
| 8 | | 4 | BLACK | USB1GND |

RoHS Compliance Notice: All Vendors providing quotations and/or materials to WinSystems, Inc., must supply a RoHS Directive "Certificate of Compliance", referencing the part number(s) of delivered items.

| DET. | REF. | DESCRIPTION | MANUFACTURER | MPART NO. | WIN. NO. | -1 | 100 | |
|------|-------|---|--------------|-------------|--------------|----|------|--|
| 100 | EI | CBL 8P, 2mm TO DUAL USB | | | | 1 | | |
| 101 | J1 | HOUSING 2.00MM, 8 POS | MOLEX | 51110-0851 | | 1 | ROHS | |
| 102 | | CRIMP TERMINAL 50394 | MOLEX | 50394-8051 | 201-0014-002 | 8 | ROHS | |
| 103 | J3,J4 | USB TYPE A PANEL MOUNT W/#4-40 THREADED INSERTS | Y.T.TECH | A009-USB 4P | | 2 | ROHS | |
| 104 | * | SHRINKABLE TUBING 34 HIGH SHRINK RATIO POLYOLEFIN | ALPHA WIRE | FIT-321-1/4 | | 3 | ROHS | |

UNLESS OTHERWISE SPECIFIED DIMENSIONS ARE IN INCHES.
TOLERANCE
FRACTIONS ANGLES +/- 1/2"
DECIMALS: .XX ± .03 .XXX ± .010

MACHINE FINISH: ✓

| | |
|----------------------------|------------------|
| CUSTOMER APPROVAL | DATE |
| APPROVAL | DATE |
| CHECKER | DATE |
| DRAFT/DESIGN M.BROWNING | DATE 10.11.06 |

WinSystems, Inc.
"THE EMBEDDED PC AUTHORITY"

CBL-275-G-1-0.5E *RoHS*
USB DUAL TO 2MM 8 POS
EPX-GX

| | | | |
|--------|-----------------|---------------------------|-------|
| SIZE C | CAGE CODE 1AUB7 | DWG. NO. CBL-275-G-1-0.5E | REV E |
| SCALE | CAD ID: | SHEET 1 OF 1 | |