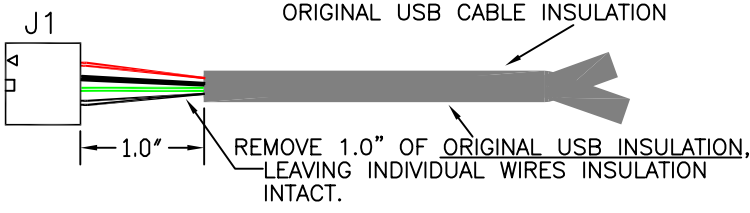
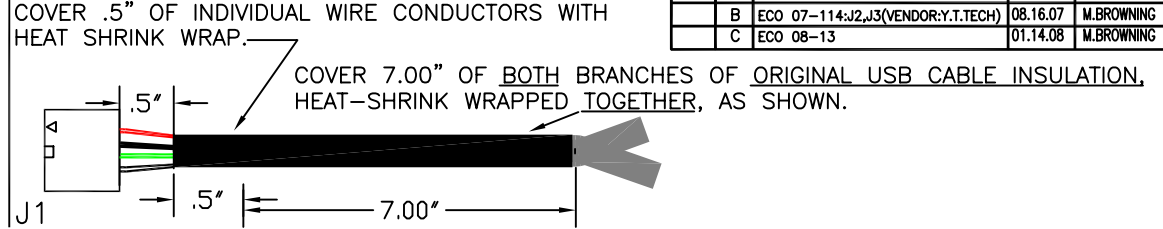


INSULATION REMOVAL DETAIL

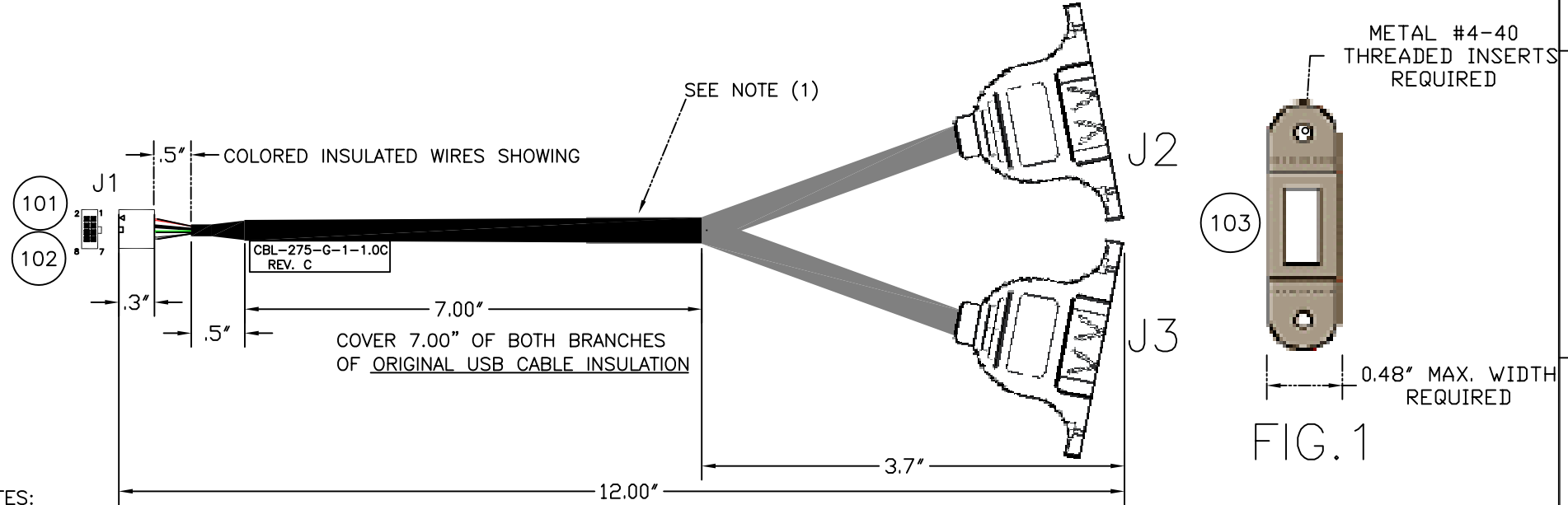


HEAT-SHRINK APPLICATION DETAIL



REVISIONS				
ZONE	REV	DESCRIPTION	DATE	CHANGED BY
	A	INITIATED	4.19.07	M.BROWNING
	B	ECO 07-114:J2,J3(VENDOR:Y.T.TECH)	08.16.07	M.BROWNING
	C	ECO 08-13	01.14.08	M.BROWNING

C



- *NOTES:
- (1) COVER 7.00" OF BOTH BRANCHES OF OUTER INSULATION WITH HEATSHRINK.
 - (2) CABLE ASSY MUST BE ELECTRICALLY TESTED.
 - (3) DET.103, (J2,J3) WIDTH MUST NOT EXCEED 11mm. SEE FIG.1
 - (4) DET.103, (J2,J3) , METAL #4-40 THREADED INSERTS REQUIRED. SEE FIG.1

***ALL ALTERNATES MUST BE ELECTRICAL and MECHANICAL EQUIVALENTS to SPECIFIED PARTS, and must be RoHS COMPLIANT.**

RoHS Compliance Notice: All Vendors providing quotations and/or materials to WinSystems, Inc., must supply a RoHS Directive "Certificate of Compliance", referencing the part number(s) of delivered items.

WIRE LIST				
J1	J2	J3	COLOR	SIGNAL
1	1		RED	USB0+5V
2		1	RED	USB1+5V
3	2		WHITE	USB0 D-
4		2	WHITE	USB1 D-
5	3		GREEN	USB0 D+
6		3	GREEN	USB1 D+
7	4		BLACK	USB0GND
8		4	BLACK	USB1GND

DET.	REF.	DESCRIPTION	MANUFACTURER	MPART NO.	WIN. NO.	-1	100	
100	EI	CBL 8P, 2mm TO DUAL USB				1		
101	J1	HOUSING 2.00MM, 8 POS	MOLEX	51110-0851		1	ROHS	
102		CRIMP TERMINAL 50394	MOLEX	50394-8051	201-0014-002	8	ROHS	
103	J2,J3	USB TYPE A PANEL MOUNT W/#4-40 THREADED INSERTS	Y.T. Tech	A009-USB 4P (ROHS)		2	ROHS	
104	*	SHRINKABLE TUBING 3d HIGH SHRINK RATIO POLYOLEFIN	ALPHA WIRE	FIT-321-1/4		3	ROHS	

UNLESS OTHERWISE SPECIFIED DIMENSIONS ARE IN INCHES. TOLERANCE FRACTIONS ANGLES +/- 1/2" DECIMALS: .XX ± .03 .XXX ± .010	CUSTOMER APPROVAL	DATE
	APPROVAL	DATE
	CHECKER	DATE
	DRAFT/DESIGN M.BROWNING	DATE 4.19.07

WinSystems, Inc.
 "THE EMBEDDED PC AUTHORITY"

CBL-275-G-1-1.0C *RoHS*
 12", USB DUAL TO 2MM 8 POS
 EPX-GX

SIZE C	CAGE CODE 1AUB7	DWG NO.	REV C
SCALE	CAD ID:	SHEET 1 OF 1	

5

4

3

2

1