

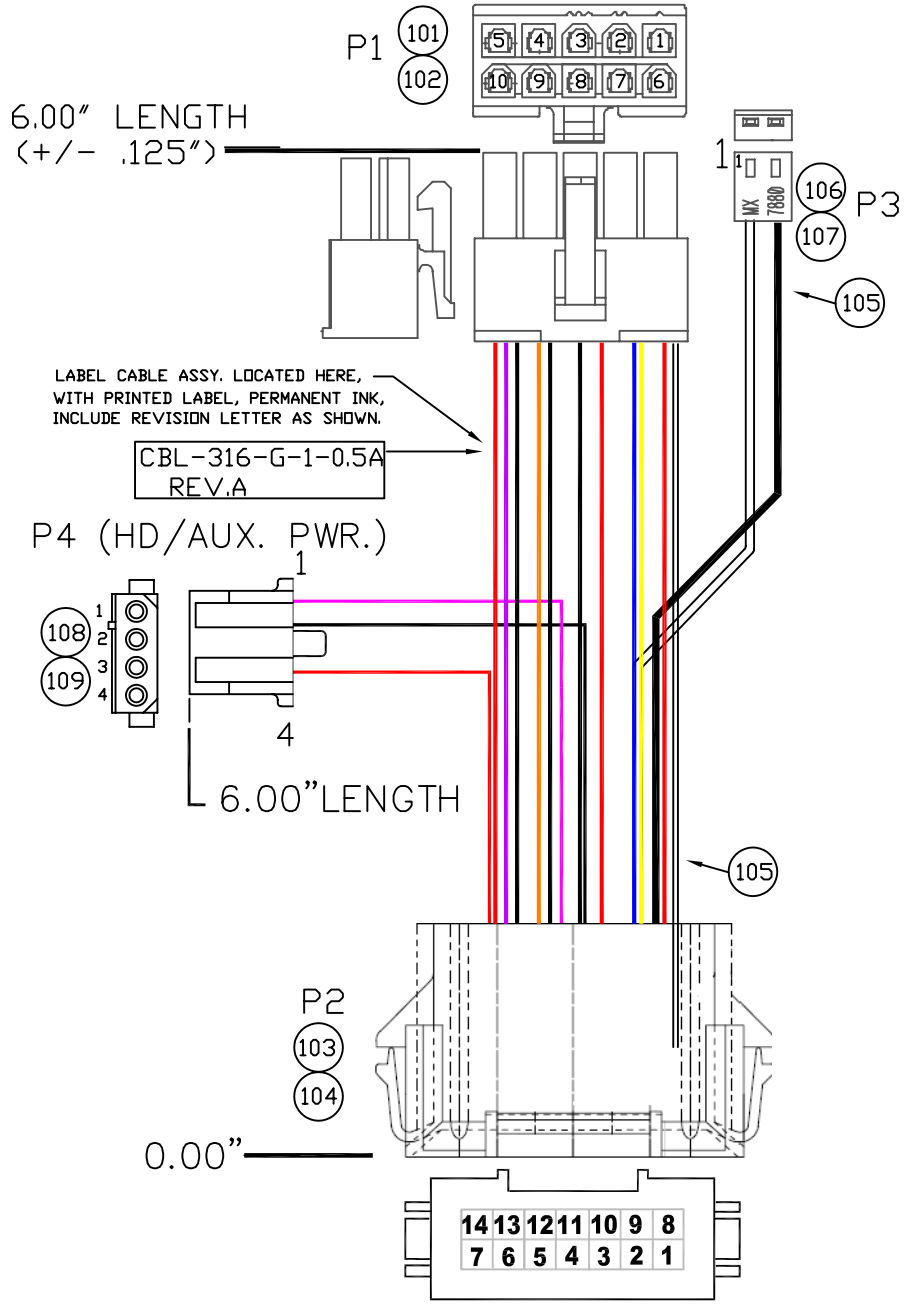
5

4

3

2

1



* NOTE: TWO OR MORE CONDUCTORS CRIMPED INTO ONE TERMINAL: P2 @ PINS 1,2.

REVISIONS				
ZONE	REV	DESCRIPTION	DATE	CHANGED BY
	A	INITIATED	02/19/07	M.E.B.

P1	P2	P3	P4	WIRE COLOR	SIGNAL
7	1	--	--	16G RED	+5V
8	2	--	--	16G RED	+5V
--	3	--	4	18G RED	+5V
5	4	--	--	16G ORANGE	+3.3V
4	5	--	*1	18G VIOLET	+12V
--	6	1	--	22G WHITE	PGOOD/RST
6	7	--	--	18G BLUE	+5V SUS
2	8	--	--	16G BLACK	GND
3	9	--	--	16G BLACK	GND
10	10	--	--	16G BLACK	GND
--	11	--	*2,3	18G BLACK	GND
9	12	--	--	18G YELLOW	-12V
--	13	2	--	22G GRAY	/PWR btn
1	14	--	--	22G GREEN	/PS on

LABEL CABLE ASSY. LOCATED HERE, WITH PRINTED LABEL, PERMANENT INK, INCLUDE REVISION LETTER AS SHOWN.

CBL-316-G-1-0.5A
REV.A

NOTES:
(1) UNLESS OTHERWISE NOTED, ALL DIMENSIONS TOLERANCES ±.125"
(2) CABLE MUST BE ELECTRICALLY TESTED.

DET.	REF.	DESCRIPTION	MANUFACTURER	MPART NO.	ROHS	-1	100
	100	EI INT. DC HARNESS, 'ENC-EPIC', ROHS					1
P1	101	* HOUSING, .165" PITCH MINI-FIT JR. RECEPTACLE 5557 DUAL ROW	MOLEX	39-01-2105	ROHS		1
	102	* Mini-Fit, HCS Crimp Terminal 44476, 16 AWG	MOLEX	44476-3112	ROHS		7
P2	103	* 4.20mm (.165") Pitch Mini-Fit BMI Plug Housing	MOLEX	15-06-0145	ROHS		1
	104	* Mini-Fit, HCS Crimp Terminal, 16 AWG	MOLEX	44478-3112	ROHS		14
	105	TIE WRAP 4"	PANDUIT	PLT1M-M	ROHS		3
P3	106	* HOUSING, .1" 7880 HIGH PRESSURE	MOLEX	10-11-2023	ROHS		1
	107	* TERMINAL, 7879 HIGH PRESSURE	MOLEX	08-50-0005 (08-50-0004)	ROHS		
P4	108	TERM. HOUSING 8981-4P	MOLEX	15-24-4048	ROHS		1
	109	TRIFURCON TERMINALS 6838	MOLEX	02-08-1202	ROHS		3
W1	**	WIRE, 16 AWG. BLACK	ALPHA WIRE	7058/19-2	ROHS		
W2	**	WIRE, 16 AWG. RED	ALPHA WIRE	7058/19-3	ROHS		
W3	**	WIRE, 16 AWG. ORANGE	ALPHA WIRE	7058/19-8	ROHS		
W4	**	WIRE, 18 AWG. BLACK	ALPHA WIRE	7057/19-2	ROHS		
W5	**	WIRE, 18 AWG. RED	ALPHA WIRE	7057/19-3	ROHS		
W6	**	WIRE, 18 AWG. YELLOW	ALPHA WIRE	7057/19-5	ROHS		
W7	**	WIRE, 18 AWG. BLUE	ALPHA WIRE	7057/19-6	ROHS		
W8	**	WIRE, 18 AWG. VIOLET	ALPHA WIRE	7057/19-10	ROHS		
W9	**	WIRE, 22 AWG. GREEN	ALPHA WIRE	7055/19-4	ROHS		
W10	**	WIRE, 22 AWG. GRAY	ALPHA WIRE	7055/19-9	ROHS		
W11	**	WIRE, 22 AWG. WHITE	ALPHA WIRE	7055/19-1	ROHS		
*		NO ALTERNATES ALLOWED UNLESS SPECIFIED.					
**		ALT. WIRE MAY BE USED. STYLE UL1429 / MIL-W-16878D TYPE B					

RoHS Compliance Notice: All Vendors providing quotations and/or materials to WinSystems, Inc., must supply a RoHS Directive "Certificate of Compliance", referencing the part number(s) of delivered items.

*ALL ALTERNATES MUST BE ELECTRICAL and MECHANICAL EQUIVALENTS to SPECIFIED PARTS, and must be RoHS COMPLIANT.

UNLESS OTHERWISE SPECIFIED DIMENSIONS ARE IN INCHES. FRACTIONS: TOLERANCE +/- 1/2" DECIMALS: .XX ± .03 .XXX ± .010	CUSTOMER APPROVAL	DATE
	APPROVAL	DATE
	CHECKER	DATE
	DRAFT/DESIGN M. BROWNING	DATE 05/05/04

WinSystems, Inc.
"THE STD BUS AUTHORITY"

CBL-316-G-1-0.5A
INT. DC HARNESS, 'ENC-EPIC', ROHS

SIZE	CAGE CODE	DWG NO.	REV
C	1AUB7	CBL-316-G-1-0.5A	A

SCALE: CAD ID:JWINGSTD/CBL265JWG SHEET 1 OF 1

5

4

3

2

1