

NOTES:

1. ALL DIMENSIONS INCLUDE CONNECTOR HOUSINGS
2. COVER ALL SOLDER CONNECTIONS WITH HEAT SHRINK
3. MUST BE ELECTRICALLY TESTED PER WIRE LIST.

Must Comply With WinSystems Cable M&A

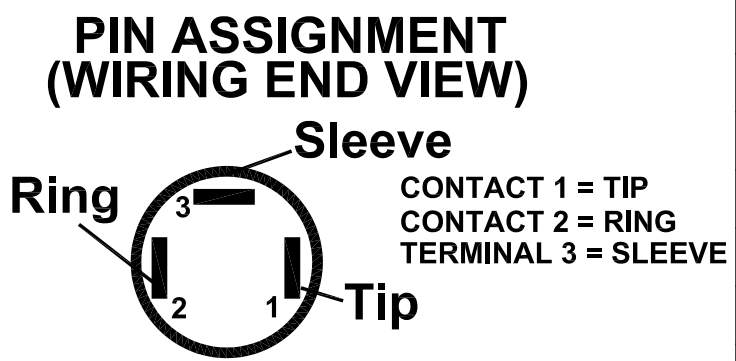
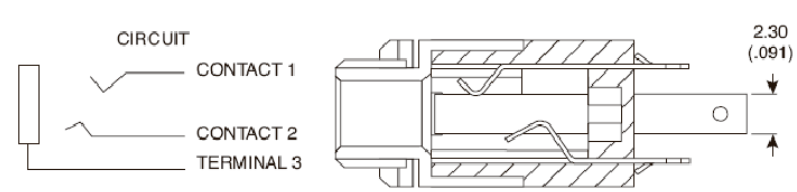
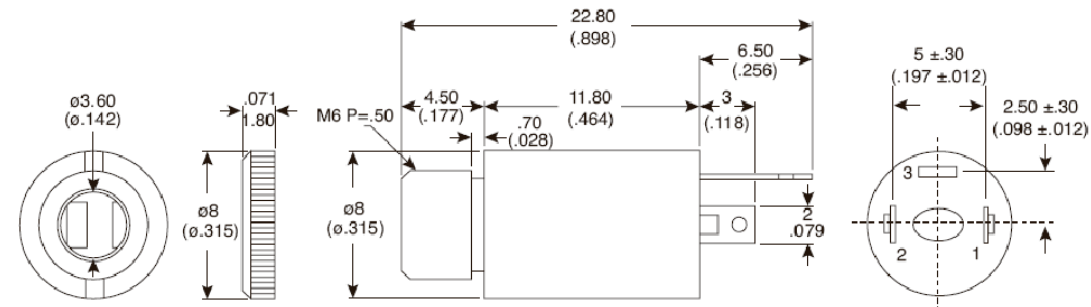
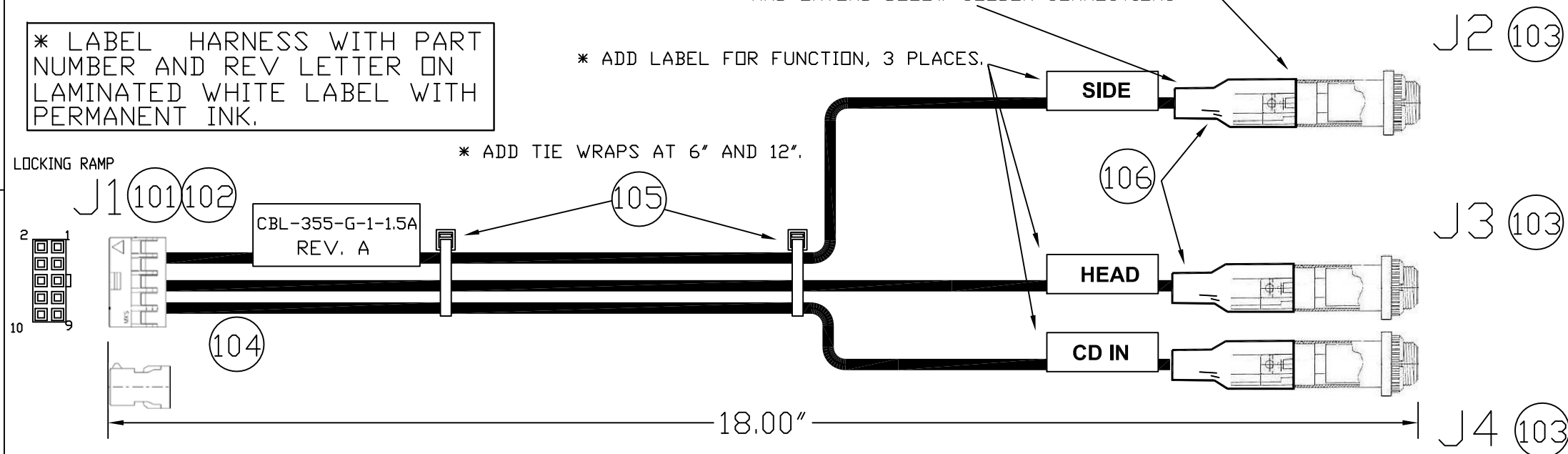
* COVER WITH HEAT SHRINK, INCLUDE CONN. HOUSING, AND EXTEND BELOW SOLDER CONNECTIONS

* LABEL HARNESS WITH PART NUMBER AND REV LETTER ON LAMINATED WHITE LABEL WITH PERMANENT INK.

* ADD LABEL FOR FUNCTION, 3 PLACES.

* ADD TIE WRAPS AT 6" AND 12".

REVISIONS				
ZONE	REV	DESCRIPTION	DATE	CHANGED BY
	A	NEW	04.20.09	M.BROWNING



WIRE LIST

J1	J2 SIDE	J3 HEAD	J4 CD IN
1	RING		
2		RING	
3	TIP		
4		TIP	
5	SLEEVE		
6		SLEEVE	
7			RING
8			
9			TIP
10			SLEEVE

RoHS Compliance Notice: All Vendors providing quotations and/or materials to WinSystems, Inc., must supply a RoHS Directive "Certificate of Compliance", referencing the part number(s) of delivered items.
***ALL ALTERNATES MUST BE ELECTRICAL and MECHANICAL EQUIVALENTS to SPECIFIED PARTS, and must be RoHS COMPLIANT.**

DET	REF	DESCRIPTION	MANUFACTURER	MPART NO.	WIN. NO.	-1	100	
100	EI	AUDIO CABLE - HD AUXILIARY				1		
101	*	200mm Pitch, Milli-Grid Crimp Housing, 10 Circuits, w/o Center Polarization Key, with Locking Ramp, LeadFree	MOLEX	51110-1060			1	RoHS
102	*	CRIMP TERMINALS MILLI-GRID, (15u") SELECT GOLD 50394	MOLEX	50394-8100/ 50394-8052			10	RoHS
103	**	3.5 mm STEREO PHONO JACK BULKHEAD MOUNTABLE	KOBICONN (MOUSER)	MJ-074N (161-7400-EX)			3	RoHS
104	*	CABLE, COMMUNICATION/CONTROL 24 AWG 2 COND. FOIL SHIELD, RoHS	ALPHA WIRE CO. www.alphawire.com	2400C			60 INCHES	RoHS
105	*	WIRE TIE 4'	PANDUIT (MOUSER)	PLT1M-M			2	RoHS
106		SHRINKABLE TUBING 3:1 HIGH SHRINK RATIO POLYOLEFIN	ALPHA WIRE	FIT-321-1/2				RoHS

UNLESS OTHERWISE SPECIFIED DIMENSIONS ARE IN INCHES. TOLERANCES FRACTIONS ANGLES +/- 1/2" DECIMALS: .XX ± .25	CUSTOMER APPROVAL	DATE
	APPROVAL	DATE
	CHECKER	DATE
	DRAFT/DESIGN M.BROWNING	DATE 04.20.09

WinSystems, Inc.			
"THE STD BUS AUTHORITY"			
CBL-355-G-1-1.5A *RoHS*			
AUDIO CABLE - HD AUXILIARY			
SIZE C	CAGE CODE 1AUB7	DWG NO. CBL-355-G-1-1.5A	REV A
SCALE	CAD ID:	SHEET	