

5

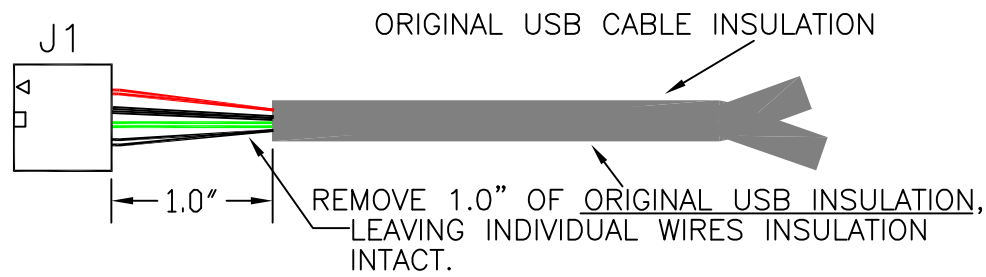
4

3

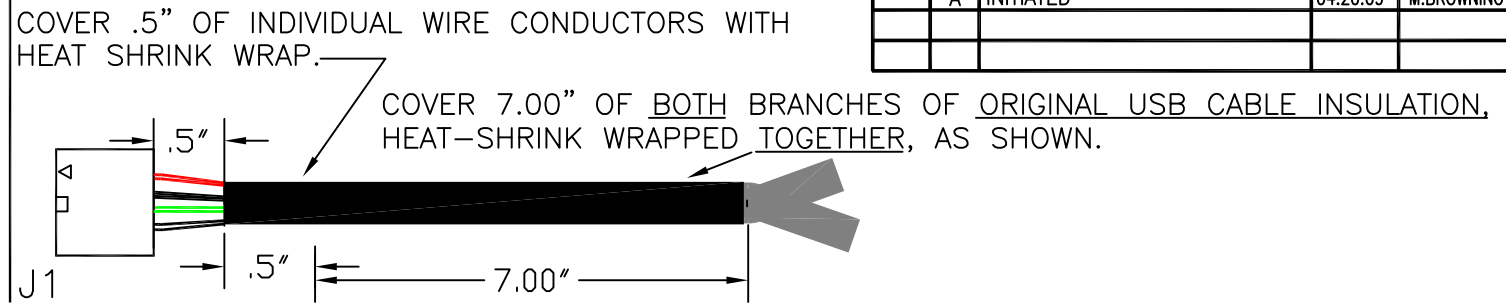
2

1

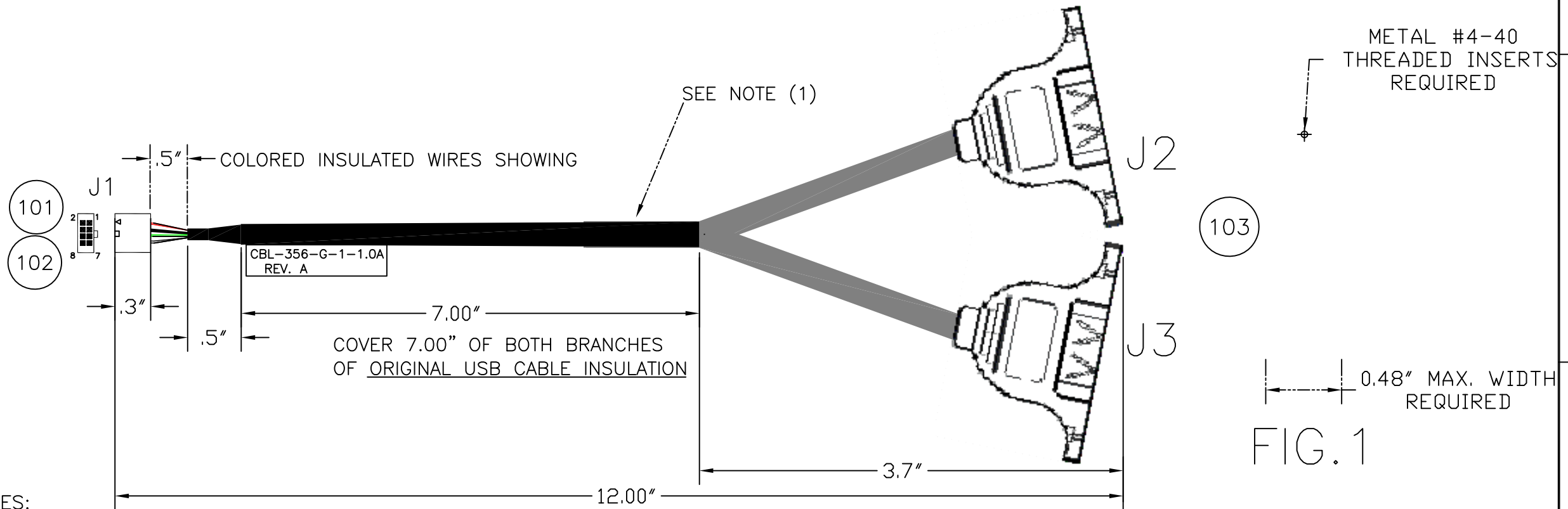
INSULATION REMOVAL DETAIL



HEAT-SHRINK APPLICATION DETAIL



REVISIONS				
ZONE	REV	DESCRIPTION	DATE	CHANGED BY
	A	INITIATED	04.20.09	M.BROWNING



- *NOTES:
- (1) COVER 7.00" OF BOTH BRANCHES OF OUTER INSULATION WITH HEATSHRINK.
 - (2) CABLE ASSY MUST BE ELECTRICALLY TESTED.
 - (3) DET.103, (J2,J3) WIDTH MUST NOT EXCEED 11mm. SEE FIG.1
 - (4) DET.103, (J2,J3) , METAL #4-40 THREADED INSERTS REQUIRED. SEE FIG.1

WIRE LIST				
J1	J2	J3	COLOR	SIGNAL
1	1		RED	USB0+5V
2		1	RED	USB1+5V
3	2		WHITE	USB0 D-
4		2	WHITE	USB1 D-
5	3		GREEN	USB0 D+
6		3	GREEN	USB1 D+
7	4		BLACK	USB0GND
8		4	BLACK	USB1GND

Assembly Must Comply With Specifications of Manufacture and Acceptance (RoHS M&A) of RoHS Compliant Cable and Cable Assemblies for WinSystems, Inc. Rev B 11.11.2008

DET.	REF.	DESCRIPTION	MANUFACTURER	MPART NO.	WIN. NO.	-1	100	
100	EI	CBL 8P, 2mm TO DUAL USB				1		
101	J1	2.00mm Pitch, Mill-Grid Crimp Housing, 8 Circuits, w/o Center Polarization Key, with Locking Ramp, LeadFree	MOLEX	51110-0860			1	ROHS
102		CRIMP TERMINAL 50394	MOLEX	50394-8051	201-0014-002		8	ROHS
103	J2,J3	USB TYPE A PANEL MOUNT W/#4-40 THREADED INSERTS	Y.T. Tech	A009-USB 4P (ROHS)			2	ROHS
104	*	SHRINKABLE TUBING 3:1 HIGH SHRINK RATIO POLYOLEFIN	ALPHA WIRE	FIT-321-1/4			3"	ROHS

UNLESS OTHERWISE SPECIFIED DIMENSIONS ARE IN INCHES. TOLERANCE FRACTIONS ANGLES +/- 1/2" DECIMALS: .XX ± .03 .XXX ± .010	CUSTOMER APPROVAL	DATE
	APPROVAL	DATE
	CHECKER	DATE
	DRAFT/DESIGN M.BROWNING	DATE 04.20.09

WinSystems, Inc.
"THE EMBEDDED PC AUTHORITY"

CBL-356-G-1-1.0A *RoHS*
12", USB DUAL TO 2MM 8 POS
W/LOCKING RAMP

SIZE C	CAGE CODE 1AUB7	DWG NO.	REV A
SCALE	CAD ID:	SHEET 1 OF 1	

5

4

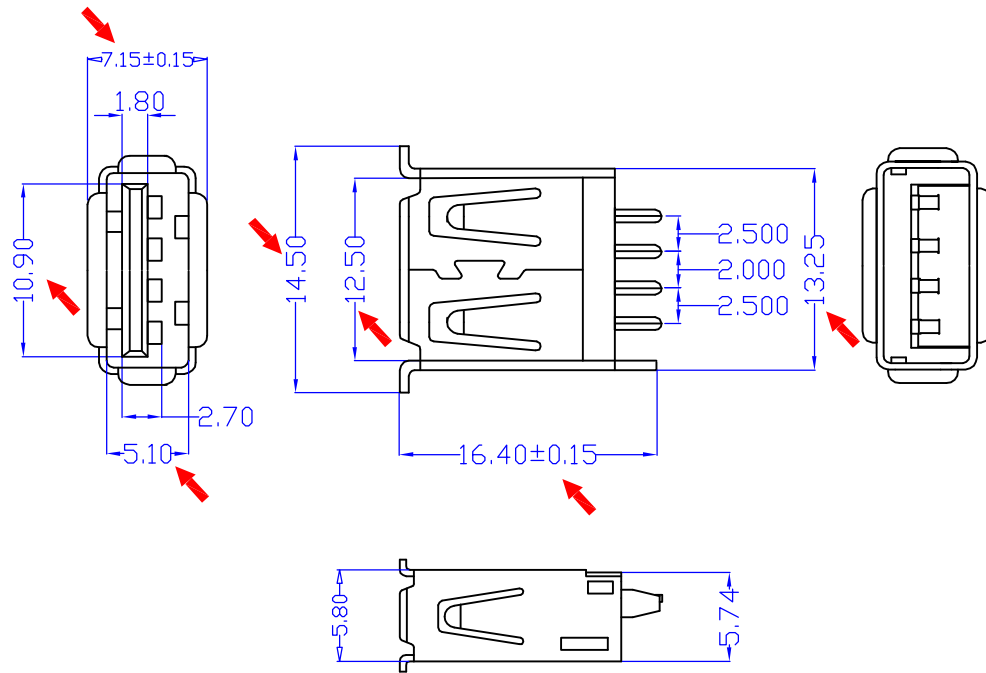
3

2

1

B/0	客戶確認,建檔	2005/01/20

USB A TYPE FEMALE




MATERIALS:

CONTACTS: Phosphor Bronze.
 Insulator: P.B.T.UL 94V-0 Rated.
 Shell: Brass .

FINISHES:

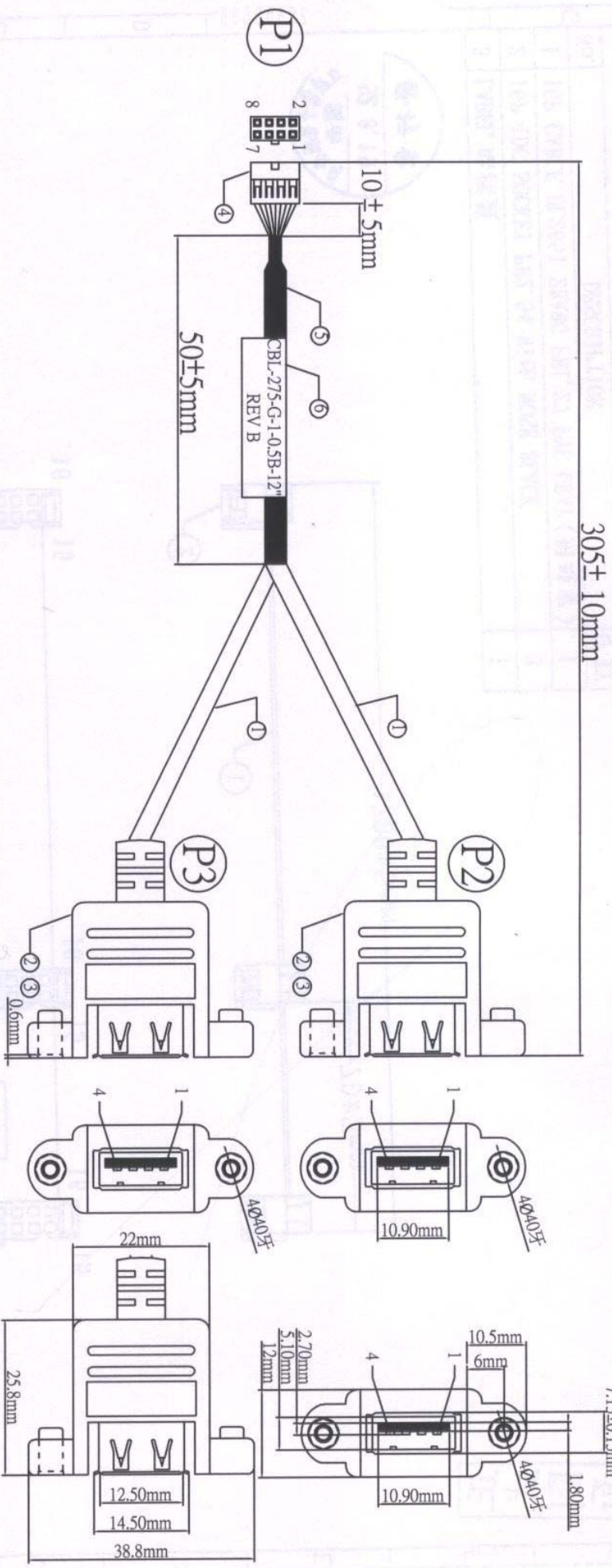
成品料號	零件料號		
	外殼	膠芯	端子
CHUSBAF03A	Nickel plated	White	Gold flash
CHUSBAF03B	Nickel plated	Beige	Gold plated 30u"
CHUSBAF03C	Nickel plated	White	Gold plated 30u"
CHUSBAF03D	Tin plated	White	Gold plated 5u"
CHUSBAF03E	Gold plated	White	Gold plated 30u"
CHUSBAF03F	Gold plated	White	Gold flash
CHUSBAF03G	Nickel plated	Black	Gold flash

Tolerances Otherwise Stated X. ±0.3 X.X ±0.2 X.XX ±0.1 X.XXX ±0.05 ANGULAR±2°	MATERIAL	CUSTOMER P/N:	 凱暢電子廠 SWEETRAY INDUSTRIAL Co.,LTD		
	TDUSBAFS02 TDUSBC01 TDUSBAFP07	CH P/N:			

PRODUCT SERIAL NO.

CLIENT NAME:

CLIENT'S P/N: CBL-275-G-1-0.5B-12"



ITEM	MATERIAL, SPECIFICATION & DESCRIPTION	COLOR	QTY	ITEM	MATERIAL, SPECIFICATION & DESCRIPTION	COLOR	QTY	APPROVED	SAM
1	UL2725 28AWGx2Px24AWGx4C DOUBLE ISOLATION OD: 5 (ROHS)	GRAY	2	4	HOUSING: WL2004HL 2*4 T:WL2004G (WITH EAR) PITCH:2.0 (ROHS)	BLACK	1	CHECK	SAM
2	A009-USB 4P (ROHS) (Y.T. Tech) optional (Note: on the Sweetray drawing)	GRAY	2	5	BLACK HOT SHRINK TUBE φ9.0 L=50mm (ROHS)	BLACK	1	CHECK	SAM
3	P1:Hard PVC gray color;inner housing : PE material (ROHS)		4	6	sticker (CBL-275-G-1-0.5B REV B-12")		1	DRAWER	KIKI

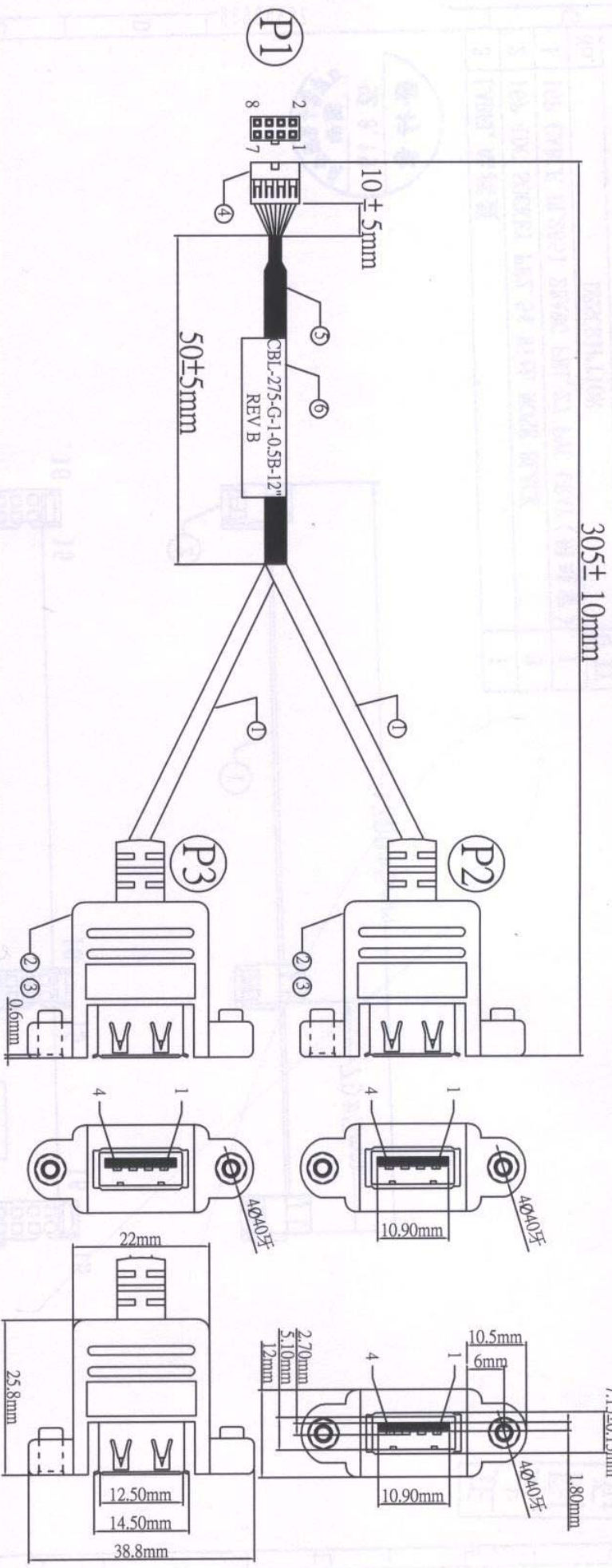
WIRE CONNECTION TABLE

MATERIAL	WIRE CONNECTION TABLE								LENGTH			
UL2725 28AWGx2Px24AWGx4C DOUBLE ISOLATION OD24.5φ (ROHS)	P1	1	2	3	4	5	6	7	8	L= mm	UNIT	mm
	COLOR	RED	RED	WHITE	WHITE	GREEN	GREEN	BLACK	BLACK			
		P2	1		2		3		4			
	P3		1		2		3		4	DATE	REV	
										07/16/07	01	

PRODUCT SERIAL NO.

CLIENT NAME:

CLIENT'S P/N: CBL-275-G-1-0.5B-12"

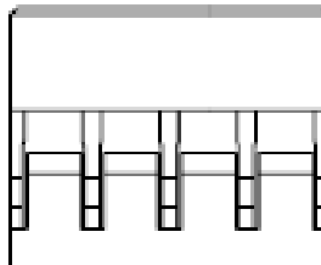
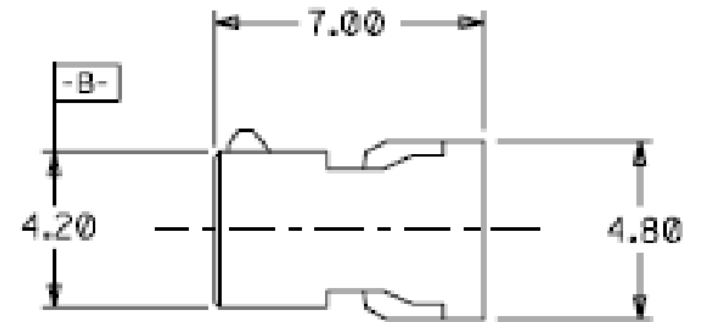
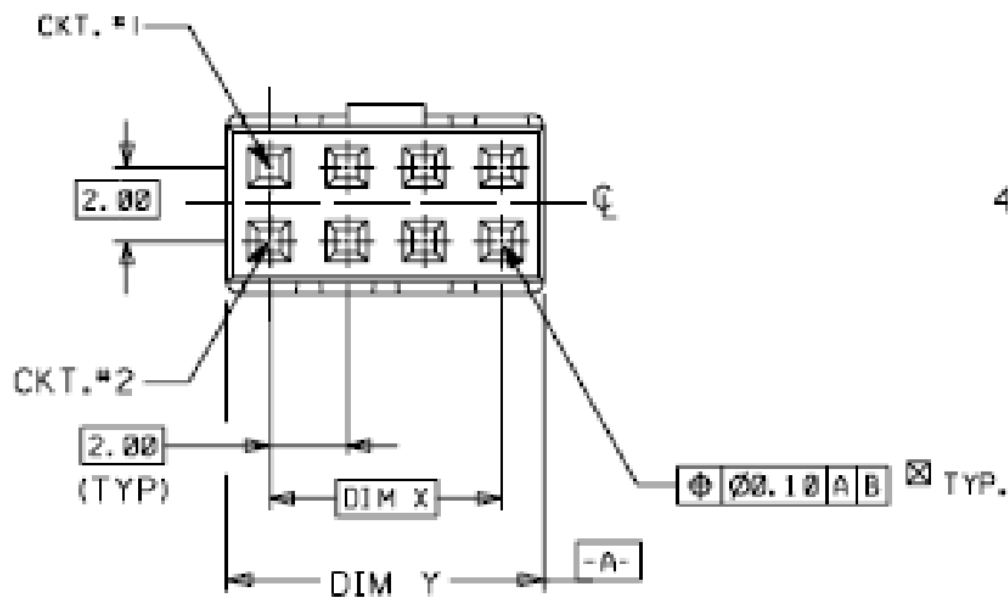
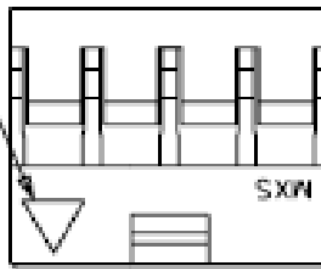


ITEM	MATERIAL, SPECIFICATION & DESCRIPTION	COLOR	QTY	ITEM	MATERIAL, SPECIFICATION & DESCRIPTION	COLOR	QTY	APPROVED	SAM
1	UL2725 28AWGx2Px24AWGx4C DOUBLE ISOLATION OD: 5 (ROHS)	GRAY	2	4	HOUSING: WL2004HL 2*4 T:WL2004G (WITH EAR) PITCH:2.0 (ROHS)	BLACK	1	CHECK	SAM
2	A009-USB 4P (ROHS) (Y.T. Tech) optional (Note: on the Sweetray drawing)	GRAY	2	5	BLACK HOT SHRINK TUBE ϕ 9.0 L=50mm (ROHS)	BLACK	1	CHECK	SAM
3	P1:Hard PVC gray color;inner housing : PE material (ROHS)		4	6	sticker (CBL-275-G-1-0.5B REV B-12")		1	DRAWER	KIKI

WIRE CONNECTION TABLE

MATERIAL	WIRE CONNECTION TABLE								LENGTH			
UL2725 28AWGx2Px24AWGx4C DOUBLE ISOLATION OD24.5 ϕ (ROHS)	P1	1	2	3	4	5	6	7	8	L= mm	UNIT	mm
	COLOR	RED	RED	WHITE	WHITE	GREEN	GREEN	BLACK	BLACK		DATE	07/16/07
		P2	1		2		3		4			REV

IST CIRCUIT
IDENTIFICATION





[Send to printer](#) [Back to datasheet](#)

Part Number: Active
50394-8051

Milli-Grid™ Crimp Terminal, Reel, 0.38µm (15µ") Select Gold, Lead free

Download Documents:

[Drawing \(PDF\)](#)

[Catalog Page \(PDF\)](#)

[Product Specification \(PDF\)](#)

Order Products:

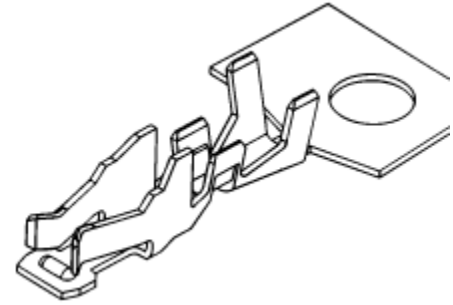
[Samples](#)

[Buy](#)

Part Details: [Show All](#)

[General](#) [Physical](#) [Electrical](#) [Reference](#) [Features and Benefits](#)

General	
Status	Active
Product Name	Milli-Grid™
Molex Series	50394
Gender	Female
Wire Size [AWG]	24, 26, 28, 30
Wire Insulation Diameter	1.40mm (.055") max.
Packaging	Reel
Electrical	
Current-max [amps]	0.5A - 30AWG, 1.0A - 28AWG, 1.5A - 26AWG
Voltage-max [volts]	125V
Alternative Products	50394-8100 Bag
Physical	
Contact	Phosphor Bronze (CuSn)
Plating Contact	0.38µm (15µ") Gold (Au)
Under Plating	Nickel (Ni)
Reference	
Product Specification	PS-51110-001
Designed In	Millimeters
Pitch / Center Spacing	2.00mm (.079")
990 Catalog Page	A-4
MX01 Catalog Page	B-5
Features and Benefits	
<ul style="list-style-type: none"> ● Early entry terminal design for superior contact 	



ELV and RoHS Compliant

Related Products: [Show All](#)

Mates with/Use with: [App. Tooling:](#)

Use With	51110	
APPLICATION TOOLING		
Region	Description	Product Number
Americas	Hand Crimper	11-01-0204
Americas	FineAdjust Applicator	63864-3000
Asia	Hand Extraction Tool	11-26-7074
Asia	Applicator for M211A Bench Press, 24-30 AWG, for 50394 Crimp Terminal	57315-3000
Europe	Parallel Action Handtool for 50394 Terminals, 24-30 AWG	69008-0959
Europe	Mini-Mac Fully Toolled	69037-1163
Europe, Americas	T2 Terminator Die	63854-3000