

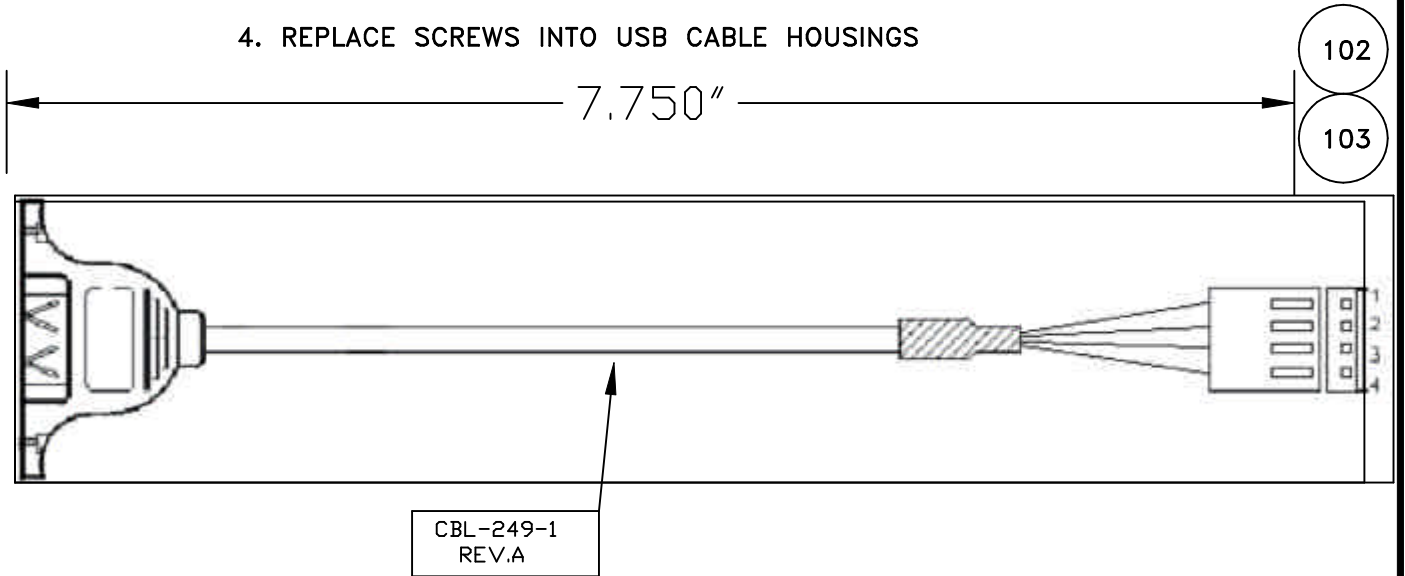
WIRE LIST

101102 COLOR

| | | |
|---|---|-------|
| 1 | 1 | RED |
| 2 | 2 | WHITE |
| 3 | 3 | GREEN |
| 4 | 4 | BLACK |

ASSEMBLY INSTRUCTIONS

1. REMOVE BRACKET FROM CABLES.
2. CUT OFF EXISTING 4 POS CONNECTOR CLOSE TO CONNECTOR.
3. TERMINATE WIRES WITH TERMINAL 103
4. REPLACE SCREWS INTO USB CABLE HOUSINGS



101

| DET | REF | DESCRIPTION | MANUFACTURER | MPART NO. | WIN. NO. | -1 | 100 |
|---|-----|--|----------------|--------------------------|--------------|----|-----|
| 100 | EI | CABLE USB TYPE A TO 4 POS MOLEX | | | CBL-249-1 | 1 | |
| 101 | ** | USB A-TYPE FEMALE 180° BRACKET MOUNT CONNECTOR | KEEN TOP INT'L | KTP-LW-772 | 112-0005-000 | | 1 |
| 102 | | CONN 4 POS 2695 | MOLEX | 22-01-3047 | | | 1 |
| 103 | * | KK CRIMP TERMINAL 2759 | MOLEX | 08-55-0102 08-55-0101 | | | 4 |
| * ALT. PIN MAY BE USED, MOLEX 08-55-0102. | | | | | | | |
| ** ALT. USB CONN. MAY BE USED, MUST HAVE WINSYSTEMS APPROVAL. | | | | | | | |

NOTES:

- (1) CABLE ASSY MUST BE ELECTRICALLY TESTED.
- (2) POPULATE ALL POSITIONS OF CONNECTOR HOUSINGS, UNUSED POSITIONS INCLUDED.
- (3) LABEL CABLE WITH PART NUMBER & REV LETTER.

| | | | | | | | |
|---|--|--|--|--|--------------|------------------------|----------|
| UNLESS OTHERWISE SPECIFIED DIMENSIONS ARE IN INCHES. TOLERANCE: | | MACHINE FINISH ✓ | | <i>WinSystems, Inc.</i> "THE STD BUS AUTHORITY" | | | |
| FRACTIONS: ANGLES: ± 1/2° DECIMALS: .XX ± .03 .XXX ± .010 | | CBL-249-1 USB TYPE A TO 4 POS MOLEX | | | | | |
| CUSTOMER | | DATE | | SIZE A | CAGE 1A87 | DRAWING NO. CBL2491 | REV A |
| APPRV | | DATE | | CAD ID: I:\DWG\STDCBL\ | | SHEET NO. 1 OF 1 | |
| CHKD | | DATE | | DRAFT/DESIGN M.BROWNING | | DATE JUNE 19, 00 | |